



nursery

Premium

pages 34-53

34. Premium **New**

- 40. Poesy
- 42. Neopolis
- 43. Metallica
- 44. Osmoz
- 46. Indiana
- 48. Brazilia
- 50. Cocoon
- 51. Neoterra

52. Premium ZERO **New**

Premium

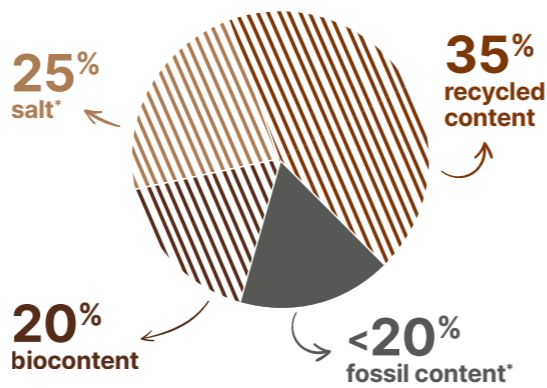
New collection

More sustainable materials

80%

Biocontent, Mineral & Recycled

Premium contains 20% crop residues from responsible sources. We recycle discarded soy waste from the animal feed industry. The result: less fossil based material and less carbon.



Low carbon solution



Thanks to its improved composition, Premium emits 29%** less CO₂ than the average heterogeneous floorings.

A good choice to decarbonise your projects.

* Vinyl is made of two main ingredients : ethylen and salt.
** Based on life cycle assessment certified by UL for an average heterogeneous product.



To go a step forwards Premium Zero

Towards a world with 0 fossil extraction

More than 95% of natural, recycled and bio-attributed content. Available on demand.



Premium in performances

35 years of satisfied customers



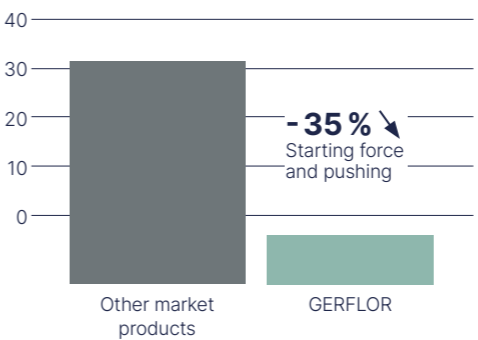
Unrivalled durability

- High density pressed wearlayer
- Pressed under 800 tons
- Immutables designs

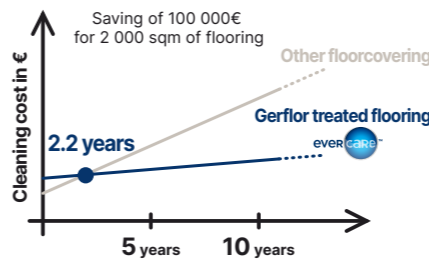


High resistance to heavy loads

- Double reinforcement for excellent dimensional stability
- Easy rolling



Lower maintenance costs

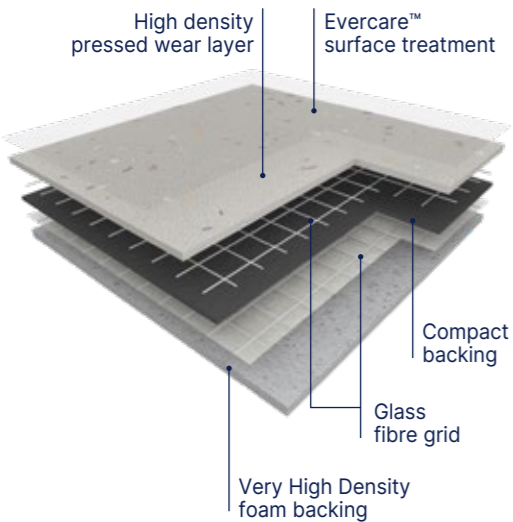


Indoor air quality

- A+ / Floorscore / M1 certified
- Phthalate-free
- Anti-bacterial activity: ISO 22196



Premium Acoustic



The floor covering is made of a **>1mm thick, pure vinyl homogeneous wear layer with no filler, incorporating very densely pressed coloured chips, with a mat finishing and without a transparent wear layer.**

It offers a T group wear rating and is available in 2 m wide sheet. The product contains a compact backing which is calendered, pressed and a Very High Density (VHD) foam backing. It is reinforced with a double glass fibre grid.

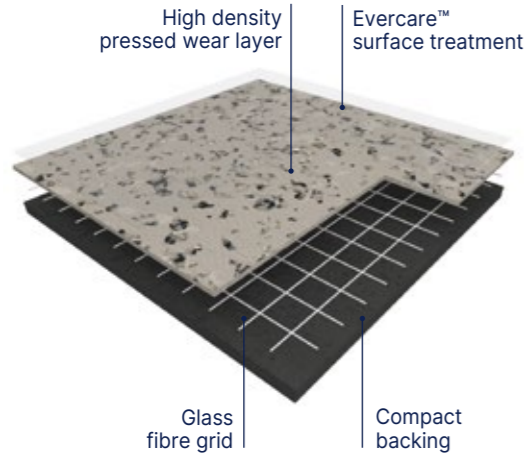
It offers a **16 dB sound insulation, an indentation resistance of 0.06 mm and a rolling heavy loads easiness.**

PREMIUM COMFORT is treated with **Evercare™**, a surface treatment obtained by UV laser crosslinking. It ensures easy maintenance and eliminates permanently the need for acrylic emulsion (metallisation). It avoids staining of chemical products used in healthcare like iodine alcohol, Betadine, eosin and anti-bacterial hand gel.

According to ISO 21702, **PREMIUM COMFORT** has **anti viral activity** against Human Coronaviruses : it reduces the number of virus by 99,7% after 2h00. According to ISO 22196, it has **anti bacterial activity** against E. coli, S. aureus and MRSA of 99% after 24h00.

It is 100% compliant with REACH. It is composed of 40% of minerals and inexhaustible materials. It is made with more than 50% recycled content; 100% of which are fully controlled and REACH compliant. It does not contain any heavy metals, any formaldehydes and it is made with phthalate free plasticizers The products emission rate of volatile organic compounds is **<10µg/m³ (TVOC after 28 days – ISO 16000-6)**. It is 100% recyclable.

Premium Compact



Our **PREMIUM COMPACT** is made of a **>1mm thick, pure inlaid wearlayer pressed under 800 tonnes with no filler, incorporating very densely pressed coloured chips, with a mat finishing and without a transparent wear layer.** It offers a T group wear rating and is available in 2 m wide sheet. Its compact backing is calendered, pressed and reinforced with a fiber grid yielding. It offers a **8 dB sound insulation, an indentation resistance of 0.02 mm and a rolling heavy loads easiness.**

PREMIUM COMPACT is treated with **Evercare™**, patented surface treatment obtained by UV laser cross-linking offering the best chemical resistance to the main products used in healthcare environment as betadine, eosin, hydro alcoholic solutions, making the maintenance easy and the floor long lasting. This treatment avoids applying any acrylic emulsion throughout the lifetime of the product.

According to ISO 21702, **PREMIUM COMPACT** has **anti viral activity** against Human Coronaviruses : it reduces the number of virus by 99,7% after 2h00.

According to ISO 22196, it has **anti bacterial activity** against E. coli, S. aureus and MRSA of 99% after 24h00.

It is composed of : 42% of recycled content / 19% of bio-sourced raw material (from agricultural vegetal waste) / 56% of mineral raw material ; 100% of which are fully controlled and REACH compliant.

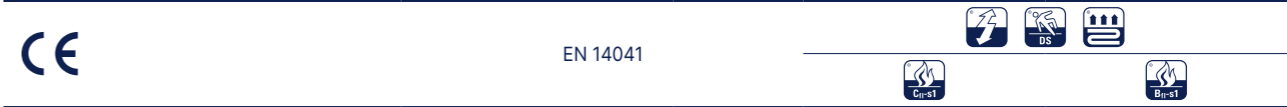
It is free of formaldehyde, heavy metals and CMR 1 & 2 or vPvB (very persistent and very bio accumulative) or PBT (persistent, bio-accumulative and toxic) and is 100% REACH compliant. **Its VOC emissions after 28 days (ISO 16000-6) are below detection levels (<10 µg / m³) and this product is classified A + (the best class) and Floorscore® & M1 certified for indoor air quality.** **PREMIUM COMPACT** has antibacterial efficacy (E.coli / S.aureus / MRSA) : >99% after 24 hours according to ISO22196.

PREMIUM COMPACT is made in France, is 100% recyclable, and the floorcovering will have its individual EPD sheet (number 4790130460.106.2).



- **Outstanding durability**
Design within the whole thickness of the wear layer, ≥ 1.02 mm thick
- **Long lasting appearance**
Pure vinyl wear layer (no filler, no transparent wear layer) for the best scratch and soiling resistance
- **Easy maintenance & matt effect**
Evercare™ surface treatment
- **Excellent indoor air quality**
TVOC after 28 days < 10 microgram/m³
- **Rolling heavy loads easiness, best stability and very high performance indentation** / acoustic 0.06 mm / 17 dB (Metallica: 16 dB) for Comfort, 0.02 mm / 8 db for Compact Glass fibre grid reinforcement & very high density foam backing

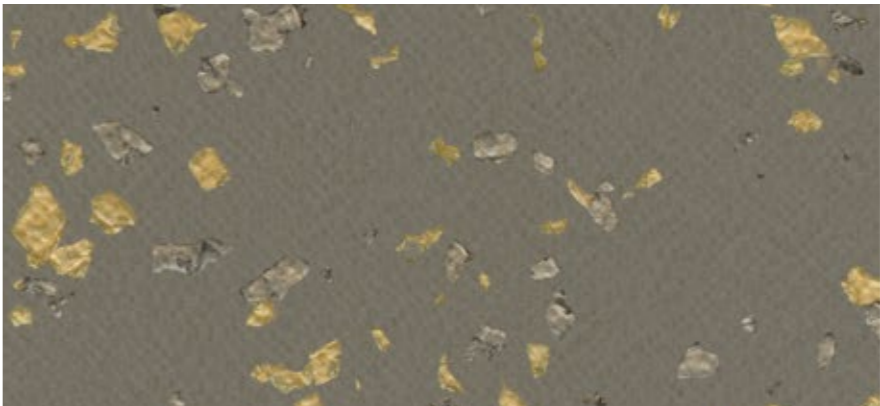
			Premium Acoustic	Premium Compact
			Brazilia / Indiana / Cocoon / Neopolis / Osmoz / Poesy / Neoterra - Metallica	Brazilia / Indiana / Cocoon / Neopolis / Osmoz / Poesy / Neoterra - Metallica
Description				
Total thickness	EN ISO 24346	mm	3.00 - 3.30	2.00
Thickness of wearlayer	EN ISO 24340	mm	≥ 1.02	≥ 1.02
Weight	EN ISO 23997	g/sqm	≥ 2800	2580 - 2620
Width of sheet	EN ISO 24341	cm	200	200
Length of sheet	EN ISO 24341	lm	25	20
Classification				
Norm / Product specification	-	-	EN ISO 11638	EN ISO 10582
European classification	EN ISO 10874	class	34-42	34-43
Fire rating	EN 13501-1	class	Cfl-s1	Bfl-s1
Static electrical propensity	EN 1815	kV	< 2	< 2
Slip resistance	EN 16165:2021 – Appendix B (DIN 51 130)	class	R10	R10
Performances				
Wear resistance	EN 660.2	mm³	≤ 2.0	≤ 2.0
Wear group	-	group	T	T
Type Binder content	EN ISO 10582	type	-	I
Dimensional stability	EN ISO 23999	%	≤ 0.40	≤ 0.40
Residual indentation (requirement)	EN ISO 24343-1	mm	≤ 0.20	≤ 0.10
Residual indentation (average measured value)	-	mm	≈ 0.06	≈ 0.02
Impact sound insulation	EN ISO 717-2	dB	17 16 (Metallica)	8
Castor chair test (type H)	ISO 4918	-	OK	OK
Thermal conductivity	EN ISO 10456	W/(m.k)	0.25	0.25
Colour fastness	EN ISO 105-B02	degree	≥ 6	≥ 6
Surface treatment	-	-	Evercare™	Evercare™
Chemical products resistance ⁽¹⁾	EN ISO 26987	-	OK	OK
Anti-bacterial activity (E. coli - S. aureus - MRSA) after 24h ⁽²⁾	ISO 22196	-	> 99% inhibits growth	> 99% inhibits growth
Anti-viral activity (human coronavirus) after 2h ⁽²⁾	ISO 21702	-	> 99.7% virucidal activity	> 99.7% virucidal activity
Environment / indoor air quality				
TVOC after 28 days	ISO 16000-6	microgram/m³	< 10	< 10
Certification	-	-	Floorscore®	Floorscore®
CE marking				



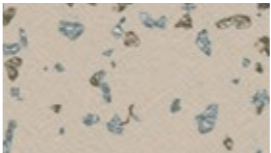
(1) Regarding the resistance to chemicals, please download the corresponding leaflet from our website.
(2) The implementation of an effective cleaning regime is the most important defence against infection.




POESY 2749 Lyrique / METALLICA 8257 Nyx




2749 Lyrique   ^ Scale 1



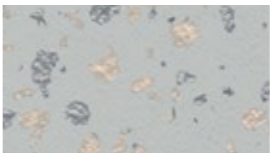
2747 Ballade  



2151 Sonate 



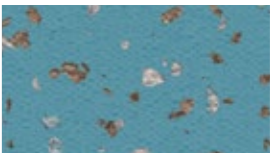
8621 Ode  



2750 Ellipse  



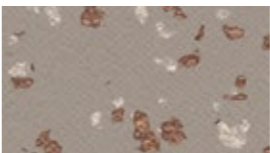
2152 Octave  



8627 Allegorie 





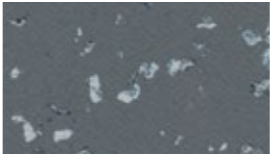
2751 Slam 



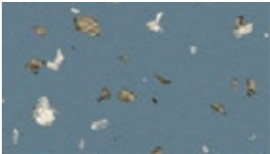
2748 Refrain 




2501 Rhapsody  



2752 Litote  



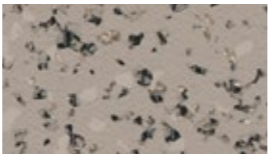
8626 Rime  



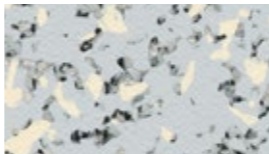
2743 Central Park



2743 Central Park ^ Scale 1



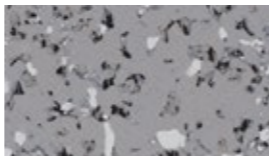
2744 Queens Soft



2745 Plaza



2741 Brooklyn



2740 Harlem Soft



2742 Times Square



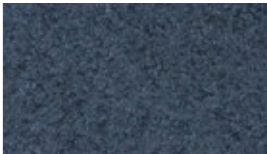
0062 Beyla



0062 Beyla ^ Scale 1



0061 Eldir



0060 Dellig



9753 Energy



9745 Cosmic



0064 Sudri



0063 Narfi



8257 Nyx



2746 Ymir



Premium **New**

Osmoz


Compact


Acoustic

17 dB

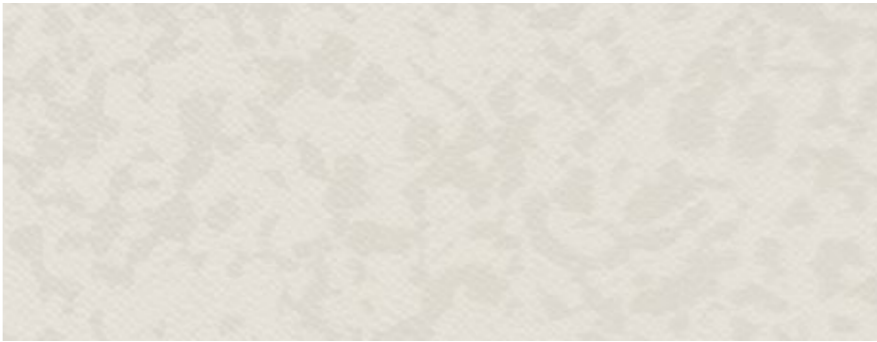

VHD

Evercare™


100% recyclable



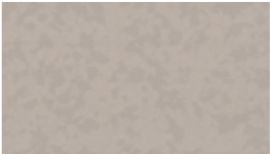
4364 Ivory / 4379 Koudou



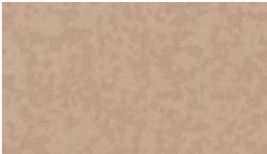
4364 Ivory  Scale 1



4378 Igloo



4349 Angora



4379 Koudou



4365 Alpaga



4380 Awara



4384 Barbadine



3792 Storm Grey



4381 Rozelle



4383 Jasmin



3791 Slate Grey



4351 Greige



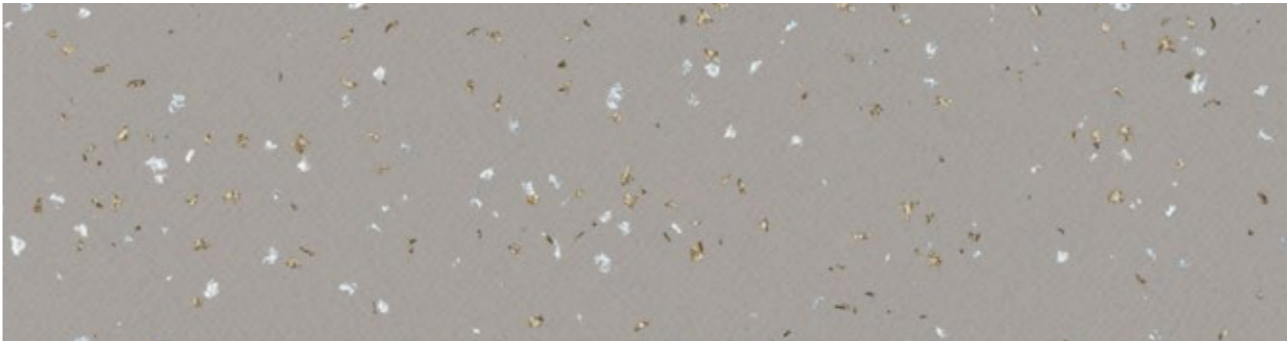
4382 Cyclades



7737 Pepper Grey



8226 Fidji

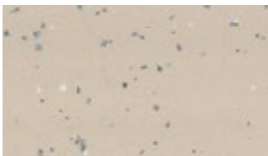


8226 Fidji

^ Scale 1



8150 Bali



4343 Tokelau



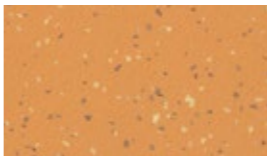
4052 Calero



4053 Diwaran



4048 Malabo



4049 Kilmia



4050 Comores



4051 Maraca



4045 Dalupiri



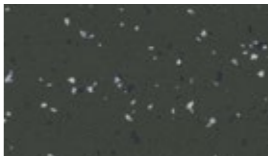
7517 Faroe



4047 Okuza



4476 Wattaru



8837 Songo



4001 Ofu



4009 Tufoa



4002 Manua

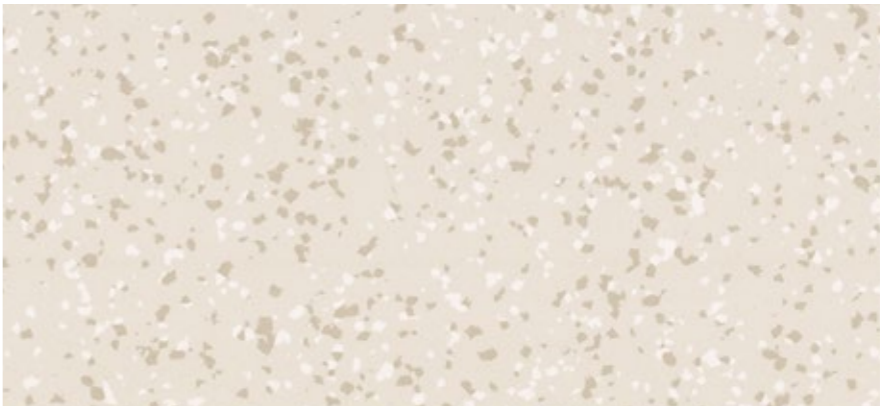


4046 Cubagua



4003 Tao





8386 Boa Vista
 

^ Scale 1



0053 Limeira




0051 Alvorada
 



0052 Olinda



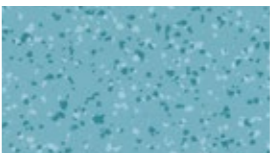

0056 Natal



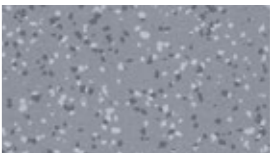

8736 Recife
 



0054 Barueri

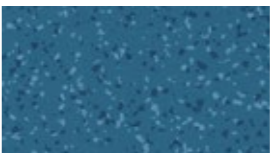
4477 Maceio

3709 Ceara




0055 Teresina

0058 Aracaju




3707 Paraiba

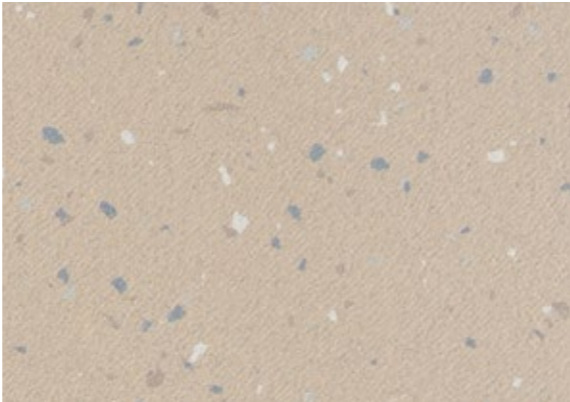

Premium **New**

Cocoon

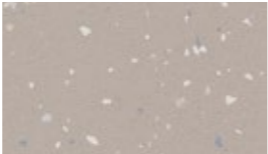
Compact Acoustic 17 dB VHD Evercare™ 100% recyclable



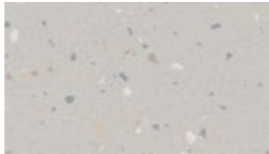
0032 Satin / 0030 Crinolin /
0027 Muslin / 0028 Organza



0032 Satin ^ Scale 1



0030 Crinolin



0027 Muslin



0029 Flannel



0028 Organza

Neoterra

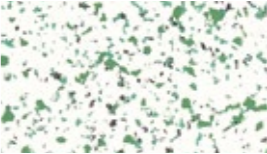
Compact Acoustic 17 dB VHD Evercare™ 100% recyclable



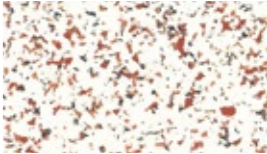
NEOTERRA 4208 Dorata / INDIANA 4052 Calero



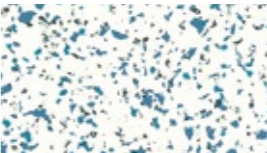
4208 Dorata ^ Scale 1



4207 Prato



4208 Soraya



4206 Lazuli

Premium ZERO New

Facing the urgent challenges of climate change and resource scarcity, we are committed to reducing the environmental impact of our products.

Together, let's build a more sustainable future, one step at a time.

we care / we act

Towards ZERO carbon

The innovative Premium ZERO formula further strengthens our commitment to reducing carbon footprints and supports your projects where very low carbon materials are required.

Premium 2018



Premium



Premium ZERO



-23% carbon

Thanks to its pioneering composition, Premium ZERO Compact carbon footprint is only 4kg eq CO₂/sqm (based on 1 year life cycle) and 7kg eq CO₂/sqm (based on 25 years life cycle)

EPD available certified by UL.



Product available on demand.

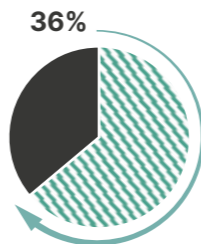
For more information, please contact your Gerflor representative

Towards ZERO fossil extraction

Premium ZERO is a new generation of flooring that's leading the way towards using zero virgin ingredients and achieving zero fossil extraction.

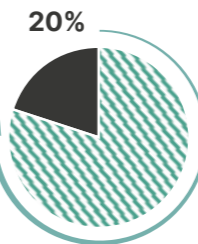
Premium 2018

64% Mineral & recycled



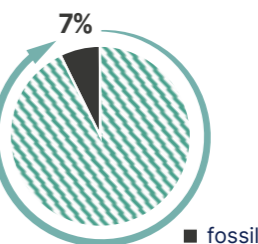
Premium

80% Biocontent, mineral & recycled



Premium ZERO

93% Biocontent, biocircular, mineral & recycled



■ fossil

Inside Premium ZERO: one step further



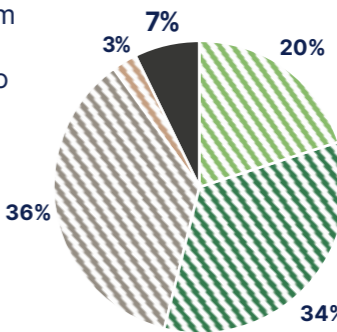
Biocontent

Ingredients made from soy residues, turning agricultural waste into a valuable resource that ensures product flexibility.



Biocircular

Vinyl made from renewable sources like used cooking oil, reducing reliance on fossil fuels while maintaining quality. Third-party certified (ISCC Plus) according to a mass balance approach.



■ biocontent ■ biocircular ■ recycled ■ mineral



"All Gerflor product ranges are designed according to a life cycle analysis model. This model shows that raw materials and product composition represent around 50% of a products CO₂ footprint based on a 25 years life cycle. In this context, Premium ZERO has a pioneering formula designed to minimise fossil raw material extraction and maximise bio, mineral and recycled content"

Innovation & Sustainability Director