



# Mipolam Homogeneous

pages 8-33

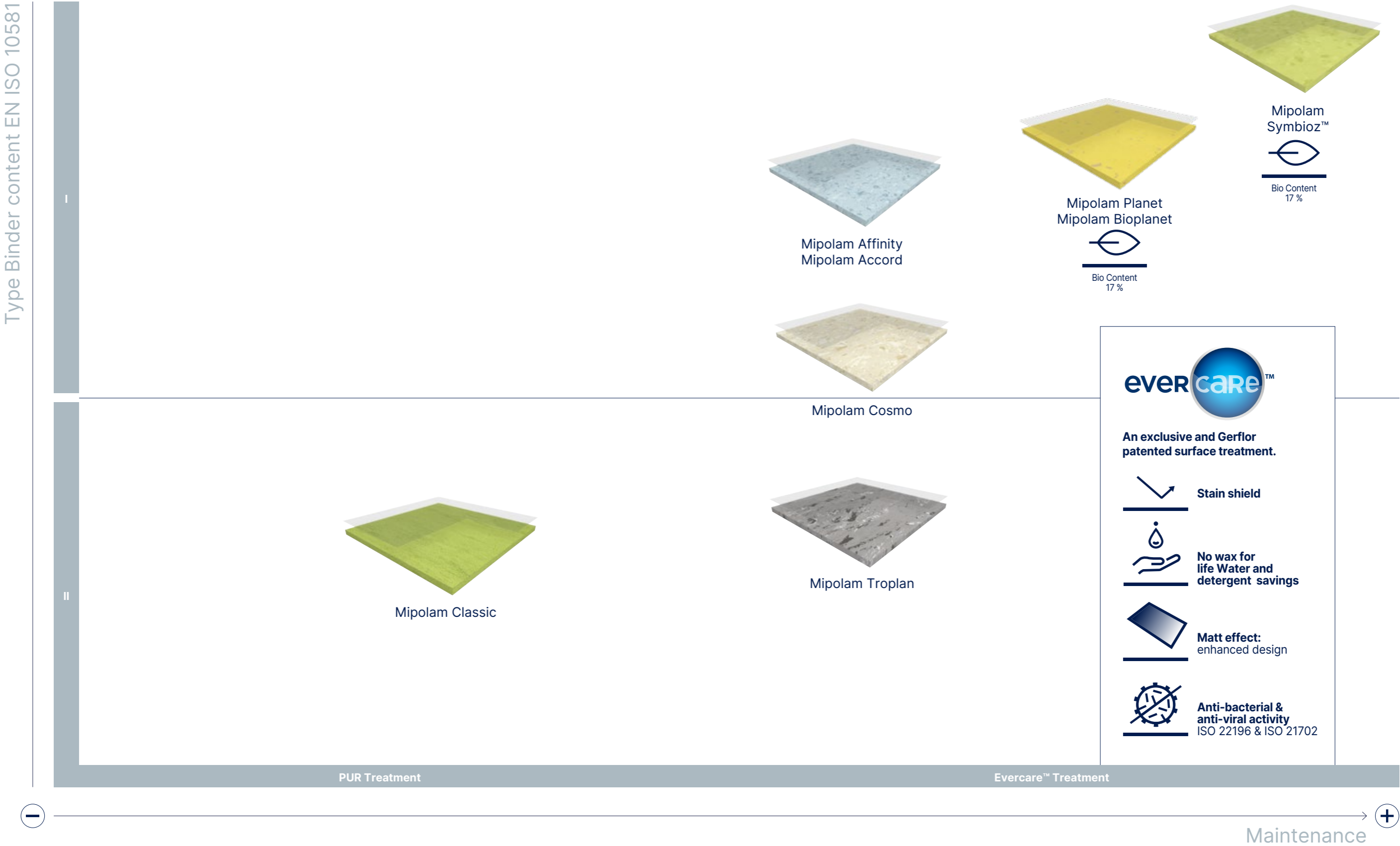
## 12. Mipolam Homogeneous Evercare™

- 14. Mipolam Symbioz™
- 18. Mipolam Planet & Bioplanet
- 24. Mipolam Affinity
- 28. Mipolam Accord
- 30. Mipolam Cosmo
- 31. Mipolam Troplan

## 32. Mipolam Homogeneous PUR

- 32. Mipolam Classic

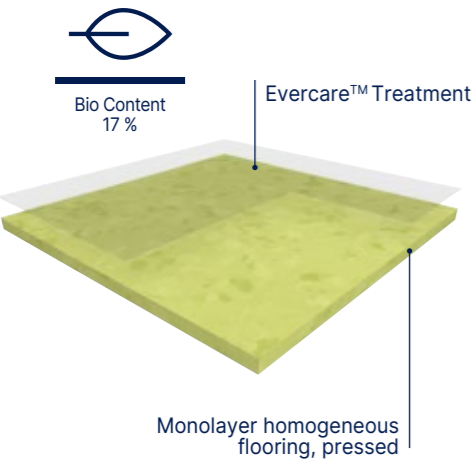
Mipolam Homogeneous



# Mipolam Homogeneous Evercare™

## Mipolam Symbioz™

Mipolam Symbioz™



**MIPOLAM SYMBIOZ™** is fully flexible homogeneous compacted floorcovering in sheet, 2m wide, providing excellent resistance to wear and tear in high traffic areas. Their weight is **2595 gr/m²**. They feature a non-directional design incorporating coloured chips to ensure an even colour throughout the thickness presenting a **nice matt finish**.  
Comprising 83% natural and recycled content, including 17% bio content, 45% mineral raw material (Salt & chalk) and 21% recycled content, **MIPOLAM SYMBIOZ™** achieves a 20% to 30% reduction in Cradle to Gate CO2 emissions compared to standard homogeneous flooring. It is 100% phthalates free and recyclable.  
This floorcovering is a non-emissive product (below the level of VOC measurement accuracy).  
According to ISO 21702, **MIPOLAM SYMBIOZ™** has **anti viral activity** against Human Coronaviruses : it reduces the number of virus by 99,7% after 2h00.  
According to ISO 22196, **MIPOLAM SYMBIOZ™** has **anti bacterial activity** against E. coli, S. aureus and MRSA of 99% after 24h00. The flooring is equipped with **Evercare™**, patented surface treatment obtained by **UV laser cross-linking** offering the **best chemical resistance to the main products used in healthcare** environment as Betadine, eosin, hydro alcoholic solutions, making the maintenance easy and long lasting the flooring.  
This treatment **avoids applying any acrylic emulsion** throughout the lifetime of the product.  
The flooring is **antistatic** (<2kV), its residual indentation is ≈ 0.02 mm. The flooring complies with the EN ISO 10581 norm, has a binder content Type I and is suitable for heavy duty traffic areas and **Bfl-s1 fire** resistance.  
As part of our sustainable development policy, this product is manufactured in the first floor covering plant awarded with the triple certification: ISO 9001 (quality), ISO 14 001 (environment) and OHSaS 18001 (safety).



**BBR40:**  
100% Bio-based plasticizer rod for Mipolam Symbioz™  
(see page 385)



**Mipolam Symbioz™ have been engineered using a full life cycle model, to guarantee the lowest environmental impact at every stage of the product life**

- **Highest durability:** product life expectancy > 20 years
- **Eco-responsible exclusive Bio based plasticizer**, 100% made from organic source
- **Evercare™:** patented polyurethane surface treatment with unique performance in staining providing chemical resistance
- **Easy maintenance:** no wax for life
- **On average 30% savings on maintenance cost**
- **15% less detergent and water use.**

**Indoor Air Quality: very low emitting material (40 times lower than European standards).**

Mipolam Symbioz™			
Description			
Total thickness	EN ISO 24346	mm	2
Weight	EN ISO 23997	g/sqm	2595
Width of sheet	EN ISO 24341	cm	200
Length of sheet	EN ISO 24341	lm	20
Classification			
Norm / Product specification	-	-	EN ISO 10581
European classification	EN ISO 10874	class	34-43
Fire rating	EN 13501-1	class	Bfl-s1
Static electrical propensity	EN 1815	kV	< 2
Slip resistance	EN 16165:2021 – Appendix B (DIN 51 130)	class	R9
Performances			
Type Binder content	EN ISO 10581	type	I
Dimensional stability	EN ISO 23999	%	≤ 0.40
Impact Sound Insulation	EN ISO 717-2	dB	5
Residual indentation (norm)	EN ISO 24343-1	mm	≤ 0.10
Residual indentation (average measured value)	-	mm	≈ 0.02
Castor chair test (type H)	ISO 4918	-	OK
Thermal conductivity	EN ISO 10456	W/(m.k)	0.25
Colour fastness	EN ISO 105-B02	degree	≥ 6
Surface treatment	-	-	Evercare™
Chemical products resistance	EN ISO 26987	class	OK
Anti-bacterial activity (E. coli - S. aureus - MRSA) after 24h <sup>(1)</sup>	ISO 22196	-	> 99% inhibits growth
Anti-viral activity (human coronavirus) after 2h <sup>(1)</sup>	ISO 21702	-	> 99.7% virucidal activity
Environment / Indoor Air Quality			
TVOC after 28 days	ISO 16000-6	microgram/m³	< 10
Certification	-	-	Floorscore®
CE Marking			
CE		EN 14041	

(1) The implementation of an effective cleaning regime is the most important defence against infection.

# Mipolam Homogeneous Evercare™

Mipolam Symbioz™



Compact

Evercare™



100% recyclable



Bio Content  
17 %



Matt finish



6027 Acacia



^ Scale 1



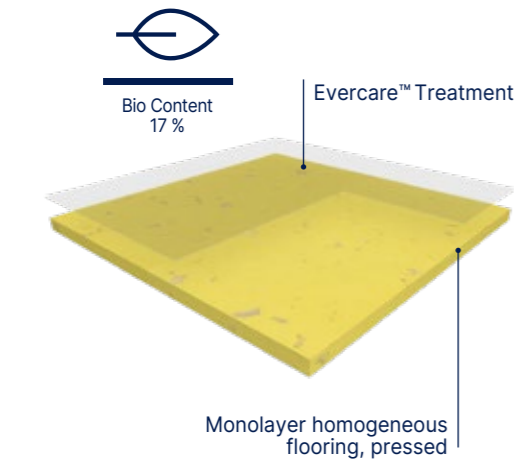
6027 Acacia

			
6002 Lipica 	6030 Stonehenge 		
			
6001 Cotton 	6009 Grey Stone 	6050 Hurricane 	6056 Tulum 
			
6005 Ghibli 	6008 Calico 	6036 Oceania 	6058 Vermiglio 
			
6031 Breeze 	6010 Mist 	6037 Lagoon 	6018 Ushuaia 
			
6034 Mole 	6029 Cloud 	6006 Blue Sky 	6075 Cardinal 
			
6041 Clay 	6039 Pebble 	6047 Sauge 	6065 Segesta 
			
6043 Wood 	6044 Sea Storm 	6057 Musk 	6025 Tangelo 
			
6045 Chocolate 	6059 Black Diamond 	6067 Kaki 	6032 Sunshine 

Mipolam Homogeneous Evercare™

Mipolam Planet & Bioplanet

Mipolam Planet & Bioplanet



**MIPOLAM PLANET** is fully flexible homogeneous compacted floorcovering in sheet, 2 m wide, providing excellent resistance to wear and tear in high traffic areas. Their weight is **2700 gr/m²**. They feature a non-directional design incorporating translucent chips that provides a 3D effect and ensures an even colour throughout the thickness presenting a nice matt finish over 40 colours. The flooring is equipped with **Evercare™**, patented surface treatment obtained by UV laser cross-linking offering the best chemical resistance to the main products used in healthcare environment as betadine, eosin, hydro alcoholic solutions, making the maintenance easy and the floor long lasting. This treatment avoids applying any acrylic emulsion throughout the lifetime of the product. It is free of formaldehyde, heavy metals and CMR 1 & 2 or vPvB (very persistent and very bio-accumulative) or PBT (persistent, bio-accumulative and toxic) and is REACH compliant. It is **100% phthalates free and recyclable**. Its VOC emissions after 28 days (ISO 16000-6) are below detection levels (< 10 microgram/m³ and g/m³) and this product is classified A + (the best class). According to ISO 21702, Mipolam Planet has **anti-viral activity** against Human Coronaviruses: it reduces the number of virus by 99.7% after 2h00. According to ISO 22196, Mipolam Planet has **anti-bacterial activity** against E. coli, S. aureus and MRSA of 99% after 24h00. The flooring is **antistatic** (< 2 kV), its residual indentation is ≈ 0.02 mm. The flooring complies with the EN ISO 10581 norm, has a binder content Type I and is suitable for heavy duty traffic areas and **Bfl-s1 fire resistance**. As part of our sustainable development policy, this product is manufactured in the first floor covering plant awarded with the triple certification: ISO 9001 (quality), ISO 14 001 (environment) and OHSaS 18001 (safety).

**MIPOLAM BIOPLANET** is fully flexible homogeneous compacted floorcovering in sheet, 2 m wide, providing excellent resistance to wear and tear in high traffic areas. Its weight is **2700 gr/m²**. It features a non-directional design incorporating translucent chips that provides a 3D effect and ensures an even colour throughout the thickness presenting a nice matt finish over 40 colours. It contains over 75% sustainable of renewable raw materials. It include a 100% bio based plasticizer, made of residues from non-agricultural food. The flooring is equipped with **Evercare™**, patented surface treatment obtained by UV laser cross-linking offering the best chemical resistance to the main products used in healthcare environment as betadine, eosin, hydro alcoholic solutions, making the maintenance easy and the floor long lasting. This treatment avoids applying any acrylic emulsion throughout the lifetime of the product. It is free of formaldehyde, heavy metals and CMR 1 & 2 or vPvB (very persistent and very bio-accumulative) or PBT (persistent, bio-accumulative and toxic) and is REACH compliant. It is **100% phthalates free and recyclable**. Its VOC emissions after 28 days (ISO 16000-6) are below detection levels (< 10 microgram/m³ and g/m³) and this product is classified A + (the best class). According to ISO 21702, Mipolam Bioplanet has **anti-viral activity** against Human Coronaviruses: it reduces the number of virus by 99.7% after 2h00. According to ISO 22196, Mipolam Bioplanet has **anti-bacterial activity** against E. coli, S. aureus and MRSA of 99% after 24h00. The flooring is **antistatic** (< 2 kV), its residual indentation is ≈ 0.02 mm. The flooring complies with the EN ISO 10581 norm, has a binder content Type I and is suitable for heavy duty traffic areas and **Bfl-s1 fire resistance**. As part of our sustainable development policy, this product is manufactured in the first floor covering plant awarded with the triple certification: ISO 9001 (quality), ISO 14 001 (environment) and OHSaS 18001 (safety).

Compact

Evercare™

100% recyclable

Matt finish

- Recycled content up to 25%, 100% Recyclable
- Bio content 17% (Mipolam BioPlanet - on demand)
- Anti-viral activity & Anti-bacterial activity
- Indoor air quality: TVOC 100 times below standard
- 40 COLOURS: Bright and subtle non directional design
- Heavy traffic resistance
- Ease of maintenance thanks to Evercare™

			Mipolam Planet	Mipolam BioPlanet	Mipolam Planet R10
Description					
Total thickness	EN ISO 24346	mm	2	2	2
Weight	EN ISO 23997	g/sqm	2700	2700	2700
Width of sheet	EN ISO 24341	cm	200	200	200
Tile size	EN ISO 24342	mm	608 × 608 <sup>(1)</sup>	608 × 608 <sup>(1)</sup>	608 × 608 <sup>(1)</sup>
Length of sheet	EN ISO 24341	lm	20	20	20
Classification					
Norm / Product specification	-	-	EN ISO 10581	EN ISO 10581	EN ISO 10581
European classification	EN ISO 10874	class	34-43	34-43	34-43
Fire rating	EN 13501-1	class	Bfl-s1	Bfl-s1	Bfl-s1
Static electrical propensity	EN 1815	kV	< 2	< 2	< 2
Slip resistance	EN 16165:2021 – Appendix B (DIN 51 130)	class	R9	R9	R10
Performances					
Type Binder content	EN ISO 10581	type	I	I	I
Dimensional stability	EN ISO 23999	%	sheet < 0.40	sheet < 0.40	sheet < 0.40
Dimensional stability (average measured value)	-	%	sheet ≈ 0.10	sheet ≈ 0.10	sheet ≈ 0.10
Impact Sound Insulation	EN ISO 717-2	dB	5	5	5
Residual indentation (norm)	EN ISO 24343-1	mm	≤ 0.10	≤ 0.10	≤ 0.10
Residual indentation (average measured value)	-	mm	≈ 0.02	≈ 0.02	≈ 0.02
Castor chair test (type H)	ISO 4918	-	OK	OK	OK
Decontamination	ISO 8690		Excellent	Excellent	Excellent
Watertightness	EN 13553	Annex A	Pass	Pass	Pass
Thermal conductivity	EN ISO 10456	W/(m.k)	0.25	0.25	0.25
Colour fastness	EN ISO 105-B02	degree	≥ 7	≥ 7	≥ 7
Surface treatment	-	-	Evercare™	Evercare™	Evercare™
Chemical products resistance	EN ISO 26987	class	OK	OK	OK
Anti-bacterial activity (E. coli - S. aureus - MRSA) after 24h <sup>(2)</sup>	ISO 22196	-	> 99% inhibits growth	> 99% inhibits growth	> 99% inhibits growth
Anti-viral activity (human coronavirus) after 2h <sup>(2)</sup>	ISO 21702	-	> 99.7% virucidal activity	> 99.7% virucidal activity	> 99.7% virucidal activity
Environment / Indoor Air Quality					
TVOC after 28 days	ISO 16000-6	microgram/m³	< 10	< 10	< 10
Certification	-	-	Floorscore®	Floorscore®	Floorscore®
CE Marking					

CE

EN 14041

DS

Bfl-s1

(1) Products available in tiles for a minimum quantity order of 500 sqm.  
(2) The implementation of an effective cleaning regime is the most important defence against infection.

# Mipolam Homogeneous Evercare™

Mipolam Planet & Bioplanet



Compact



Evercare™



100% recyclable




5404 Vanilla Sky  ^ Scale 1



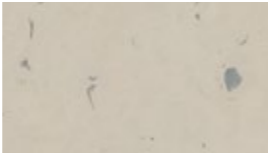
5439 Moon Way 



5403 Moon Dust 



5412 Moon Stone 



5441 Clay Soil 



5418 Terra Nera 



5438 Andalusite 




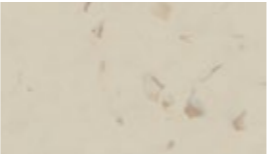
5443 Wood Path 



5444 Rocky Hill 



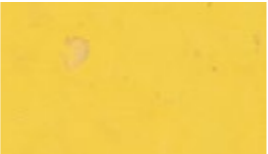
5402 Ivory Dust 



5424 Hawk Eye 




5432 Sun Stone 



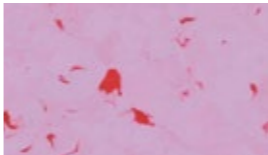
5422 Sunflower 



5428 Shedded Ground 



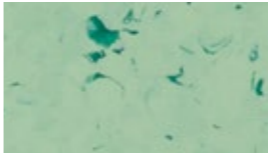
5445 Tree Bark 



5482 Sugar Drip 



5437 Reef Water 



5417 Foggy Hill 



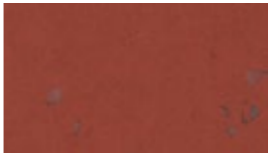
5427 Green Zest 



5447 Aventurine 




5455 Lava Flow 



5475 Intense Ruby 



5406 Moqui 



5416 Acquamarina 




5426 Shadow 



5436 Tiger Eye 



5456 Intense Indigo 




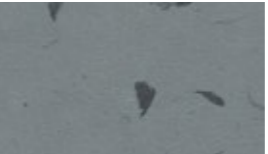
5466 Rocky Blue 




5446 Blue Nug 



5430 Sideral Grey 




5450 Blended Ashes 



5420 Stone Powder 



5413 Rain Fall 



5410 Silex 




5408 Chalk Dust 



5460 Lava Stone 




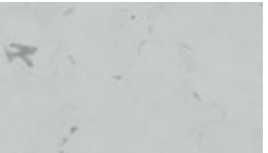
5459 Stormy Cloud 



5429 Fog Patch 




5439 Moon Way 



5411 Atlantic Grey 

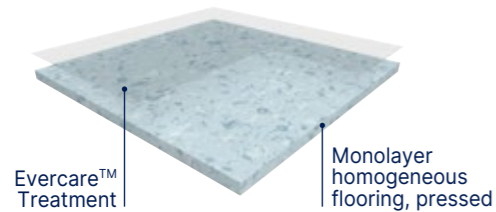


5409 Pebble Beach 

# Mipolam Homogeneous Evercare™

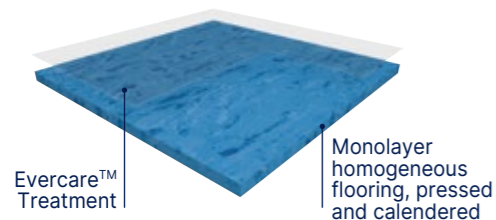
Mipolam Affinity / Accord / Cosmo / Troplan

## Mipolam Affinity



**MIPOLAM AFFINITY** is a vinyl flooring homogeneous pressed in 2 m sheets, with a thickness of 2 mm and a **weight of 2800 g**. The non-directional design with colour throughout the thickness is available in 50 references presenting a contrasted designed & a **matt finish**. This flooring is recommended for collective buildings making skirtings easier, as well as angles and welding. The flooring is equipped with **Evercare™**, patented surface treatment obtained by **UV laser cross-linking** offering **the best chemical resistance to the main products used in healthcare** environment as Betadine, eosin, hydro alcoholic solutions, making the maintenance easy and the floor long lasting. This treatment **avoids applying any acrylic emulsion** throughout the lifetime of the product. According to ISO 21702, **MIPOLAM AFFINITY** has **anti-viral activity** against Human Coronaviruses: it reduces the number of virus by 99.7% after 2h. According to ISO 22196, **MIPOLAM AFFINITY** has **anti-bacterial activity** against E. coli, S. aureus and MRSA of 99% after 24h. It is free of formaldehyde, heavy metals and CMR 1 & 2 or vPvB (very persistent and very bio-accumulative) or PBT (persistent, bio-accumulative and toxic) and is **REACH compliant**. It is 100% phthalate free and recyclable. Its VOC emissions after 28 days (ISO 16000-6) are below detection levels (<10 microgram/m³) and this product is classified A + (the best class). This flooring is **antistatic** (< 2 kV), its residual indentation is ≤ 0.02 mm to 150 minutes respecting EN ISO 24343-1. This flooring complies with EN ISO 10581 offering a Binder content Type I, which makes it suitable for heavy duty traffic areas. It has a **Bfl-s1 fire** resistance.

## Mipolam Accord



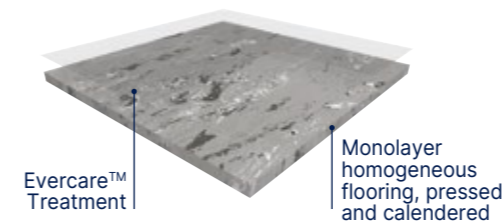
**MIPOLAM ACCORD** is a vinyl flooring homogeneous calendered and pressed in 2m sheets, with a thickness of 2 mm and a **weight of ≤ 2790 g**. The semi-directional design with colour throughout the thickness is available in 28 references presenting a nice **matt finish**. This flooring is recommended for collective buildings making skirtings easier, as well as angles and welding. The flooring is equipped with **Evercare™** the latest improvements in polyurethane surface treatment obtained by **UV laser cross-linking**. This Evercare™ **avoids staining of chemical products used in Healthcare** like Betadine, eosin or anti-bacterial hand gel and increases the durability of the flooring. This treatment has excellent maintenance characteristics and does not require the application of acrylic polishes. According to ISO 21702, **MIPOLAM ACCORD** has **anti-viral activity** against Human Coronaviruses: it reduces the number of virus by 99.7% after 2h. According to ISO 22196, **MIPOLAM ACCORD** has **anti-bacterial activity** against E. coli, S. aureus and MRSA of 99% after 24h. The flooring is composed of minimum **25% recycled content 100% controlled** and is **REACH compliant**. It is 100% phthalate free and 100% recyclable. This flooring is **antistatic** (<2kV). The product is non-reactive to residual indentation with a value ≤ 0.02 mm to 150 minutes respecting EN ISO 24343-1. The flooring is compliant with EN ISO 10581 norm, has a binder content type I, is suitable for heavy duty traffic areas and has a **Bfl-s1 fire** resistance. The product emission rate of volatile organic compounds is < 10 microgram/m³ (TVOC after 28 days ISO 16000-6).

## Mipolam Cosmo



**MIPOLAM COSMO** is a vinyl flooring homogeneous calendered and pressed in 2 m sheets, with a thickness of 2 mm and a **weight ≤ 3000 g**. The semi-directional design with colour throughout the thickness is available in 10 references presenting a nice **matt finish**. This flooring is suitable for medium to high traffic areas, and facilitates floor-wall junctions, angles and welding treatments. The flooring is equipped with **Evercare™**, patented surface treatment obtained by UV laser cross-linking offering **the best chemical resistance to the main products used in healthcare** environment as Betadine, eosin, hydro alcoholic solutions, making the maintenance easy and long lasting the flooring. This treatment avoids applying any acrylic emulsion throughout the lifetime of the product. According to ISO 21702, **MIPOLAM COSMO** has **anti-viral activity** against Human Coronaviruses: it reduces the number of virus by 99.7% after 2h. According to ISO 22196, **MIPOLAM COSMO** has **anti-bacterial activity** against E. coli, S. aureus and MRSA of 99% after 24h. It is composed of 45% minerals, 22% of inexhaustible material and at least **25% of recycled 100% controlled**. It is free of formaldehyde, heavy metals and CMR 1 & 2 or vPvB (very persistent and very bio-accumulative) or PBT (persistent, bio-accumulative and toxic) and is **REACH compliant**. It is 100% phthalate free and 100% recyclable. VOC emissions after 28 days (ISO 16000-6) are below detection levels with <10 microgram/m³ and this product is classified A + (the best class). The flooring is **antistatic** (< 2 kV), its residual indentation is ≤ 0.02 mm. The flooring is compliant with EN ISO 10581 norm, has a binder content type I, is suitable for heavy duty traffic areas and has a **Bfl-s1 fire** resistance.

## Mipolam Troplan



**MIPOLAM TROPLAN** is a vinyl flooring homogeneous calendered and pressed in 2 m sheets, with a thickness of 2 mm and a **weight ≤ 3300 g**. The directional design with colour throughout the thickness is available in 18 references presenting a nice **matt finish**. This flooring is suitable for medium to high traffic areas, and facilitates floor-wall junctions, angles and welding treatments. The flooring is equipped with **Evercare™**, patented surface treatment obtained by **UV laser cross-linking** offering **the best chemical resistance to the main products used in healthcare** environment as Betadine, eosin, hydro alcoholic solutions, making the maintenance easy and long lasting the flooring. This treatment **avoids applying any acrylic emulsion** throughout the lifetime of the product. According to ISO 21702, **MIPOLAM TROPLAN** has **anti-viral activity** against Human Coronaviruses: it reduces the number of virus by 99.7% after 2h. According to ISO 22196, **MIPOLAM TROPLAN** has **anti-bacterial activity** against E. coli, S. aureus and MRSA of 99% after 24h. It is composed of 45% minerals, 22% of inexhaustible material and at least **25% of recycled 100% controlled**. It is free of formaldehyde, heavy metals and CMR 1 & 2 or vPvB (very persistent and very bio-accumulative) or PBT (persistent, bio-accumulative and toxic) and is **REACH compliant**. Mipolam Troplan is 100% phthalate free and 100% recyclable. VOC emissions after 28 days (ISO 16000-6) are below detection levels with < 10 microgram/m³ and this product is classified A + (the best class). The flooring is **antistatic** (< 2 kV), its residual indentation is ≤ 0.03 mm. The flooring is compliant to the EN ISO 10581 norm, has a binder content type II, is suitable for heavy duty traffic areas and has a **Bfl-s1 fire** resistance.



# Mipolam Homogeneous Evercare™

Mipolam Affinity / Accord / Cosmo / Troplan

  
Compact

  
Compact  
608 × 608 mm

Evercare™

 100% recyclable

High performing homogeneous multipurpose floorings

Suitable for heavy traffic areas (education, healthcare, shops)

- Mipolam Affinity / Mipolam Accord / Mipolam Cosmo / Mipolam Troplan:  
Evercare™ - New revolutionary patented polyurethane surface treatment with unique performance in staining providing unrivalled chemical and scratching resistance
- Antistatic
- Densely compacted surface for improved wear and ease of maintenance

			Mipolam Affinity	Mipolam Accord	Mipolam Cosmo	Mipolam Troplan
Description						
Total thickness	EN ISO 24346	mm	2	2	2	2
Weight	EN ISO 23997	g/sqm	2800	2790	3000	3300
Width of sheet	EN ISO 24341	cm	200	200	200	200
Length of sheet	EN ISO 24341	lm	20	20	20	20
Tile size	EN ISO 24342	mm	608 × 608 <sup>(1)</sup>	608 × 608 <sup>(1)</sup>	608 × 608 <sup>(1)</sup>	608 × 608
Number of tiles per package	-	-	20	20	20	20
Classification						
Norm / Product specification	-	-	EN ISO 10581	EN ISO 10581	EN ISO 10581	EN ISO 10581
European classification	EN ISO 10874	class	34-43	34-43	34-43	34-43
Fire rating	EN 13501-1	class	Bfl-s1	Bfl-s1	Bfl-s1	Bfl-s1
Static electrical propensity	EN 1815	kV	< 2	< 2	< 2	< 2
Slip resistance	EN 16165:2021 – Appendix B (DIN 51 130)	class	R9	R9	R9	R9
Performances						
Type Binder content	EN ISO 10581	type	I	I	I	II
Dimensional stability (requirement)	EN ISO 23999	%	Sheet ≤ 0.40 Tile ≤ 0.25	Sheet ≤ 0.40 Tile ≤ 0.25	Sheet ≤ 0.40 Tile ≤ 0.25	Sheet ≤ 0.40 Tile ≤ 0.25
Dimensional stability (average measured value)	EN ISO 23999	%	-	-	-	-
Impact Sound Insulation	EN ISO 717-2	dB	5	5	5	4
Residual indentation (norm)	EN ISO 24343-1	mm	≤ 0.10	≤ 0.10	≤ 0.10	≤ 0.10
Residual indentation (average measured value)	-	mm	≈ 0.02	≈ 0.02	≈ 0.02	≈ 0.03
Castor chair test (type H)	ISO 4918	-	OK	OK	OK	OK
Thermal conductivity	EN ISO 10456	W/(m.k)	0.25	0.25	0.25	0.25
Colour fastness	EN ISO 105-B02	degree	≥ 6	≥ 6	≥ 6	≥ 6
Surface treatment	-	-	Evercare™	Evercare™	Evercare™	Evercare™
Chemical products resistance	EN ISO 26987	class	OK	OK	OK	OK
Anti-bacterial activity (E. coli - S. aureus - MRSA) after 24h <sup>(2)</sup>	ISO 22196	-	> 99% inhibits growth	> 99% inhibits growth	> 99% inhibits growth	> 99% inhibits growth
Anti-viral activity (human coronavirus) after 2h <sup>(2)</sup>	ISO 21702	-	> 99.7% virucidal activity	> 99.7% virucidal activity	> 99.7% virucidal activity	> 99.7% virucidal activity
Environment / Indoor Air Quality						
TVOC after 28 days	ISO 16000-6	microgram/m³	< 10	< 10	< 10	< 10
Certification	-	-	Floorscore®	Floorscore®	Floorscore®	Floorscore®
CE Marking						



EN 14041

(1) Products available in tiles tiles for a minimum order quantity of 500 sqm.  
(2) The implementation of an effective cleaning regime is the most important defence against infection.

# Mipolam Homogeneous Evercare™

Mipolam Affinity

  
Compact

  
Compact  
608 × 608 mm

Evercare™

  
100% recyclable

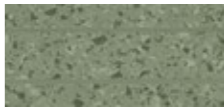


4476 Amethyst  
 

^ Scale 1



4476 Amethyst - 4402 Yuki



► MCR40<sup>(1)</sup>  
► CR40<sup>(2)</sup>





4417 Aquamarine  
 



4408 Crystal Ice  
 



4482 Orchid  
 



4448 Ruby  
 



4496 Light Sapphire  
 



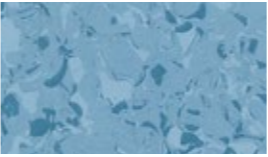
4409 Matte Grey  
 



4481 Rosaspina  
 



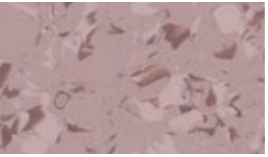
4475 Cinabre  
 





4416 Sapphire  
 



4410 Violet Grey  
 



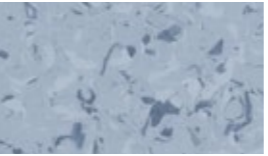
4437 Cashmere Rose  
 





4455 Orange Sunlight  
 



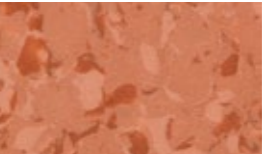
4446 Blue Ocean  
 



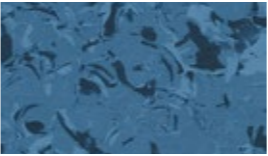
4426 Baltic  
 



4429 Gray Opal  
 



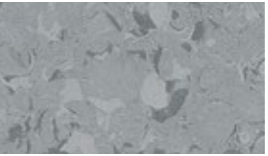
4435 Butternut  
 



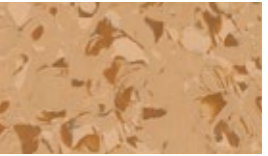
4436 Santorini  
 



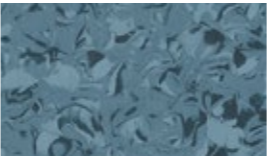
4420 Silver Grey  
 



4430 Pearl Grey  
 





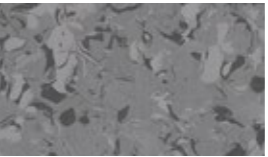
4425 Amber  
 



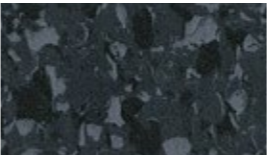
4466 Thistle  
 



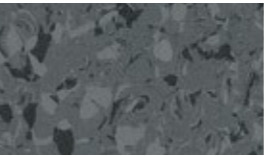
4450 Stormy Weather  
 



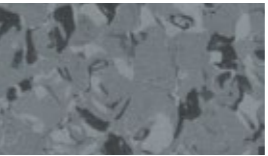
4434 Cast Iron  
 



4460 Black Stone  
 



4459 Grey Storm  
 



4433 Ash Coat  
 

(1)  Mentioned colors available with MCR40 specific multicolor welding rod (code: H058)

(2) All colors available with CR40 matching uni welding rod (code: 0585)

# Mipolam Homogeneous Evercare™

Mipolam Affinity

  
Compact

  
Compact  
608 × 608 mm

Evercare™

  
100% recyclable



Matt finish

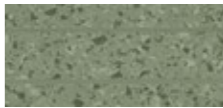


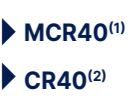
4402 Yuki  


^ Scale 1





4402 Yuki - 4447 Light Emerald

  
MCR40<sup>(1)</sup>

  
CR40<sup>(2)</sup>



4445 Mocca  




4443 Lime Taupe  



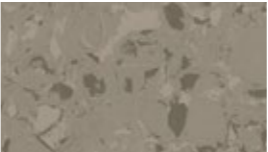

4444 Havana Brown  




4467 Clover  



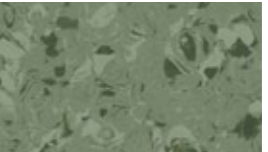

4431 Exotic Mud  

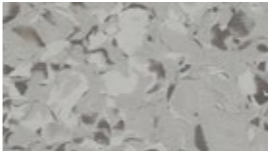
4463 Greige  




4428 Sandy  

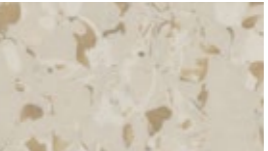
4457 Olivine  

4413 Marlyn  




4441 Light Greige  

4404 Milkshake  




4427 Pine Forest  




4412 Tundra  



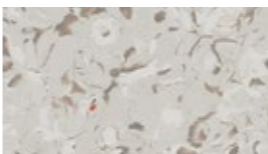

4405 Sand Opal  



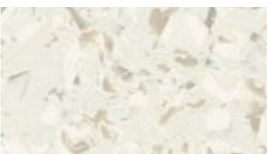

4424 Smoked Opal  





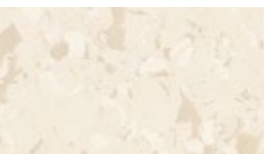

4407 Spearmint  

4411 Raffia  

4401 Quartz  




4403 Natural Shade  




4447 Light Emerald  




4432 Citrine  




4422 Mango  


(1)  Mentioned colors available with MCR40 specific multicolor welding rod (code: H058)

(2) All colors available with CR40 matching uni welding rod (code: 0585)

# Mipolam Homogeneous Evercare™

Mipolam Accord


  
Compact

  
Compact  
608 × 608 mm

Evercare™

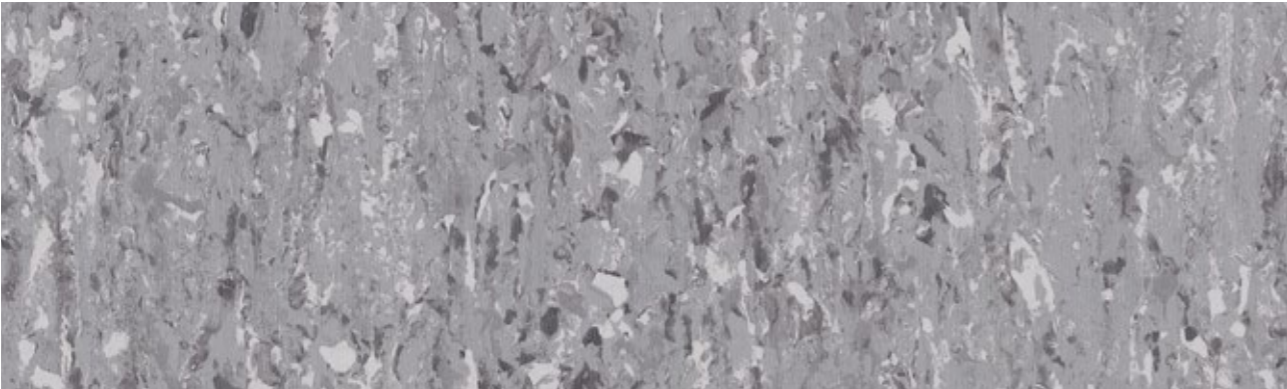
 100% recyclable






► MCR40<sup>(1)</sup>











► CR40<sup>(2)</sup>



0330 Kruger   ^ Scale 1



0330 Kruger / 0321 Salt

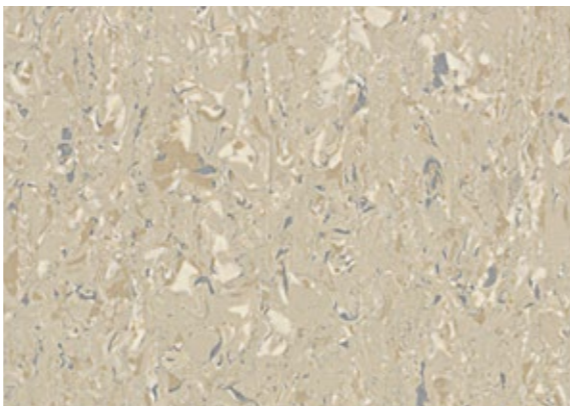
			
0321 Salt  	0301 Louise  	0305 Light Sand  	0332 Dore  
			
0312 Powell  	0303 Manitoba  	0324 Sand  	0447 Grunsee  
			
0310 Huron  	0319 Toba  	0441 Loch Ness  	0315 Orange River  
			
0306 Inari  	0320 Ontario  	0463 Bourget  	
			
0316 Malaren  	0450 Thames  	0443 Krumme  	
			
0346 Roxen  	0360 Balaton  	0459 Mississippi  	

\* All colors available with MCR40 specific multicolor welding rod (code: H058) and with CR40 matching uni welding rod (code: 0585)

# Mipolam Homogeneous Evercare™

## Mipolam Cosmo

Compact 608 × 608 mm  
Evercare™  
100% recyclable



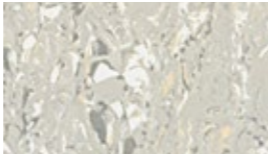
2633 Lichen ^ Scale 1



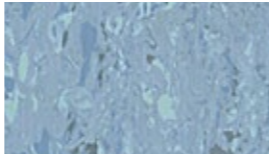
2603 Lemon Chiffon



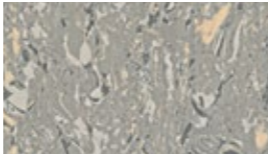
2317 Soft Green



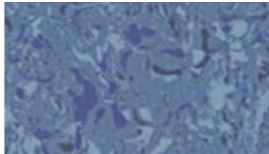
2609 Light Smoke



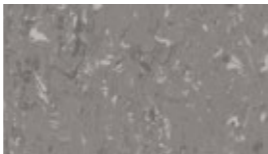
2606 Azur



2610 Silver



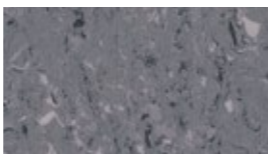
2636 Overseas



2638 Pure Grey



2355 Real Red



2639 Smart Grey



## Mipolam Troplan

Compact 608 × 608 mm  
Evercare™  
100% recyclable



1004 Earth ^ Scale 1



1009 Light Grey



1032 Yellow



1055 Apricot



1002 Beige



1010 Grey



1006 Blue



1007 Green



1003 Light Ocre



1059 Blue Grey



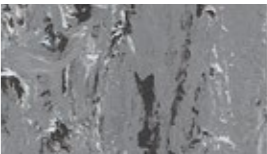
1036 Medium Blue



1037 Medium Green



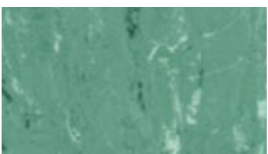
1035 Ocre



1040 Dark Grey



1056 Dark Blue



1057 Dark Green



1033 Brown



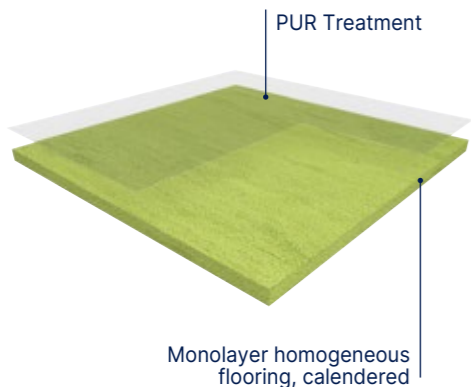
1060 Anthracite



# Mipolam Homogeneous PUR

## Mipolam Classic

### Mipolam Classic



**MIPOLAM CLASSIC 1.5 mm** is a flexible homogeneous calendered compacted floorcovering in tiles or sheets, with directional design, colour dyed as a raw mixture to ensure even colour throughout the thickness of 1.5 mm and a **weight of  $\leq 2520$  g**. Its surface is densely compacted for improved wear and ease of maintenance. It receives a polyurethane (**PUR**) surface treatment for ease of maintenance and to avoid the use of an immediate acrylic emulsion after installation. The flooring complies with the **EN ISO 10874** (34-43) and EN ISO 10581, has a binder content type II, has Bfl-s1 fire resistance. It is suitable for heavy traffic areas. It is 100% recyclable. Its VOC emissions after 28 days (ISO 16000-6) are below detection levels ( $< 10$  microgram/m<sup>3</sup>) and this product is classified A + (the best class).

**MIPOLAM CLASSIC 2 mm** is a flexible homogeneous calendered compacted floorcovering in tiles or in 2 m sheets, with a thickness of 2 mm and a **weight of  $\leq 3300$  g**. This directional design, colour dyed as a raw mixture to ensure even colour throughout the thickness is available in 14 references. Its surface is densely compacted for improved wear and ease of maintenance. It receives a polyurethane (**PUR**) surface treatment for ease of maintenance and to avoid the use of an immediate acrylic emulsion after installation. The flooring complies with the **EN ISO 10874** (34-43) and EN ISO 10581, has a binder content type II, has Bfl-s1 fire resistance. It is suitable for heavy traffic areas. It is 100% recyclable. Its VOC emissions after 28 days (ISO 16000-6) are below detection levels ( $< 10$  microgram/m<sup>3</sup>) and this product is classified A + (the best class).

Mipolam Classic				
Description				
Total thickness	EN ISO 24346	mm	1.5	2
Weight	EN ISO 23997	g/sqm	2520	3300
Width of sheet	EN ISO 24341	cm	200	200
Length of sheet	EN ISO 24341	lm	20	20
Tile size	EN ISO 24342	mm	-	300 × 300 <sup>(1)</sup> / 608 × 608
Number of tiles per package	-	-	-	50 / 20
Classification				
Norm / Product specification	-	-	EN ISO 10581	EN ISO 10581
European classification	EN ISO 10874	class	23-31	34-43
Fire rating	EN 13501-1	class	B <sub>f1</sub> -s1	B <sub>f1</sub> -s1
Static electrical propensity	EN 1815	kV	< 2	< 2
Performances				
Type Binder content	EN ISO 10581	type	II	II
Dimensional stability	EN ISO 23999	%	≤ 0.40	Sheet ≤ 0.40 / Tile ≤ 0.25
Impact Sound Insulation	EN ISO 717-2	dB	-	4
Residual indentation (norm)	EN ISO 24343-1	mm	≤ 0.10	≤ 0.10
Residual indentation (average measured value)	-	mm	≈ 0.03	≈ 0.03
Castor chair test (type H)	ISO 4918	-	OK	OK
Thermal conductivity	EN ISO 10456	W/(m.k)	0.25	0.25
Colour fastness	EN ISO 105-B02	degree	≥ 6	≥ 6
Surface treatment	-	-	PUR	PUR
Chemical products resistance	EN ISO 26987	class	OK	OK
Environment / Indoor Air Quality				
TVOC after 28 days	ISO 16000-6	microgram/m³	< 10	
Certification	-	-	Floorscore®	
CE Marking				
<div><div>CE</div><div>EN 14041</div><div><div></div></div></div>				

(1) Tiles (300 × 300 mm) available for a minimum order quantity of 500 sqm.



0002 Platinum ▲ Scale 1



All colours available as 300 × 300mm tiles upon request for a minimum order quantity of 500 sqm.  
▲ Thickness: 1.5 mm - Sheet format only