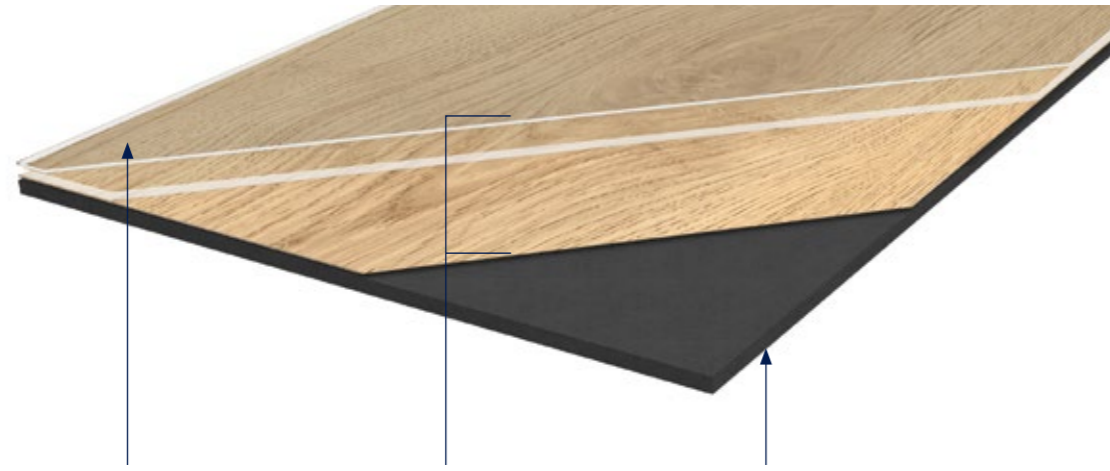
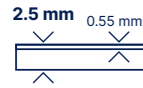


Creation Tiles & planks

Creation 55



PROTECSHIELD™

ENHANCED PERFORMANCES



Micro scratch resistance



Easy maintenance

ULTRA MATT SURFACE



Natural look

4D DESIGN

CRYSTAL WEAR LAYER



Authentic Look

HIGH DEFINITION PRINTED FILM



Ultra realism

STRUCTURED EMBOSS



Ultra realistic surface

BEVELLED EDGES



Tiles & Planks effect

RESILIENT COMFORT CORE



Acoustic comfort



Walking comfort



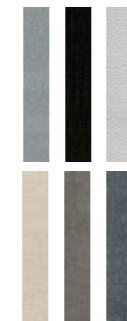
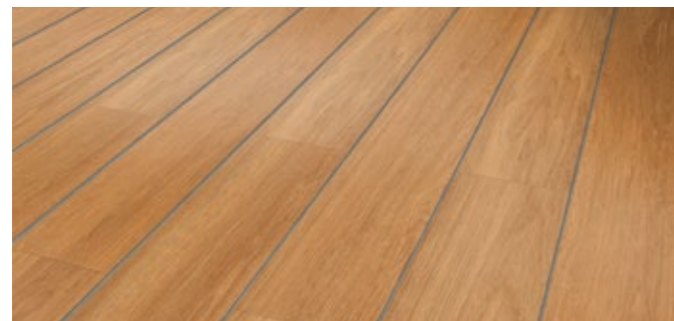
Easy installation



Easy cutting

Creation Tiles & planks decorative strips

Format (mm) 4×914mm



Code: 3203 + Color code



100% Reach Phthalate free



100% Recyclable Up to 35% recycled content



TVOC emissions below detection level (TVOC < 10µg/m³ after 28 days) No formaldehyde

Formats (mm)



Glue down

Creation 55

Creation 55 is a synthetic, decorative, flexible, antistatic abrasion group T floorcoverings available in tile or plank, with bevelled edges. It consists in a 0.55 mm thick transparent wear layer, a design film and a Resilient Comfort Core to provide softness and comfort surface. The overall thickness is 2.5 mm. They benefit from a cross-linked polyurethane surface treatment (**Protecshield™**), making maintenance easier and prevent from micro scratches.

Creation 55 is a glued floorcovering, resistant to use (commercial / industrial use) of 33 / 42 according to EN-ISO 10874 and has Bfl -s1 class for smoke emission according to EN 13501-1.

Creation 55 is made with phthalate free plasticizers, except recycled content. It is 100% recyclable and made with 35% of recycled content. It is 100% compliant with REACH. **The product emission rate of organic compounds is < 10 microgram/m³** (TVOC < 28 days – ISO 16000-6).

Can be combined with pre-adhesive underlayer

Gerflor Smart Fix 16dB



Code: 1698 - Format: 1m x 7.5ml



Creation 55

| Creation 55 | Creation 55 Trend | Creation 55 Design |
|-------------|-------------------|--------------------|
|-------------|-------------------|--------------------|

| Description | | | |
|--|---|--------------|--|
| Total thickness | EN ISO 24346 | mm | 2.50 |
| Thickness of wearlayer | EN ISO 24340 | mm | 0.55 |
| Weight | EN ISO 23997 | g/sqm | 3850 |
| Size | EN ISO 24342 | mm | Planks - 184,15×1219,2 / 914,4×914,4 / 152×762 / 230×1500 Tiles - 457,2×914,4 / 609,6×609,6 |
| Number of planks / tiles and sqm per box | - | - | 15-5-33-9-9-9/ 3,36-4,18-3,82-3,11-3,76-3,35 |
| Classification | | | |
| Norm / Product specification | - | - | EN ISO 10582 |
| European classification | EN ISO 10874 | class | 33-42 |
| Fire rating | EN 13501-1 | class | Bfl-s1 |
| Static electrical propensity | EN 1815 | kV | < 2 |
| Slip resistance wet: ramp test with oil | EN 16165:2021 – Appendix B (DIN 51 130) | class | R10 |
| Performances | | | |
| Wear resistance | EN 660.2 | mm³ | ≤ 2.0 |
| Wear group | - | group | T |
| Type Binder content | ISO 10582 | type | I |
| Room impact | NF S 31074 | dB | 77 |
| Impact sound insulation | EN ISO 717-2 | dB | 4 |
| Dimensional stability (norm) | EN ISO 23999 | % | ≤ 0.25 |
| Dimensional stability (average measured value) | - | % | ≤ 0.10 |
| Residual indentation | EN ISO 24343-1 | mm | ≤ 0.10 |
| Castor chair test (type H) | ISO 4918 | - | OK |
| Thermal conductivity | EN ISO 10456 | W/(m.k) | 0.25 |
| Colour fastness | EN ISO 105-B02 | degree | ≥ 6 |
| Surface treatment | - | - | ProtecShield™ |
| Chemical products resistance | EN ISO 26987 | - | OK |
| Environment / indoor air quality | | | |
| TVOC after 28 days | ISO 16000-6 | microgram/m³ | < 10 |
| Certification | - | - | Floorscore® |

CE marking

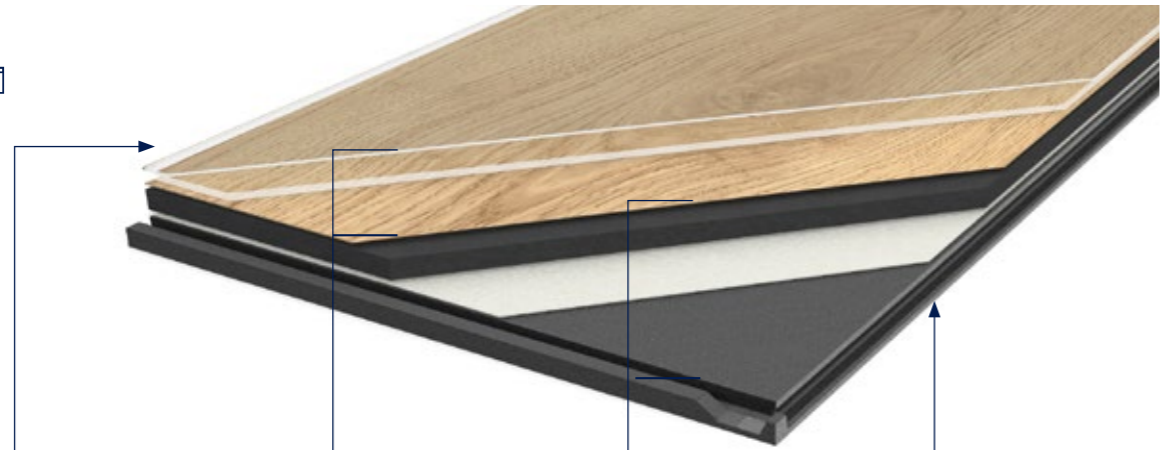
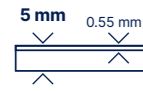


EN 14041



Creation Tiles & planks

Creation 55 Solid Clic



PROTECSHIELD™

ENHANCED PERFORMANCES

Micro scratch resistance

Easy maintenance

ULTRA MATT SURFACE

Natural look

4D DESIGN

CRYSTAL WEAR LAYER

Authentic Look

HIGH DEFINITION PRINTED FILM

Ultra realism

STRUCTURED EMBOSS

Ultra realistic surface

BEVELLED EDGES

Tiles & Planks effect

DUOCORE 2.0 TECHNOLOGY

RESILIENT COMFORT CORE

Acoustic comfort



Walking comfort

NEW RIGID CORE



Renovation over ceramic tiles 6mm/2mm



Resistance against high temperature variation

EXCLUSIVE INTERLOCKING SYSTEM

ANGULAR ON LONG SIDE

Quiet installation

VERTICAL ON SHORT SIDE

Traffic resistance Durability



Fast & easy to install



Waterproof Joints



100% Reach Phthalate free



100% Recyclable Up to 55% recycled content



TVOC emissions below detection level (TVOC < 10µg/m³ after 28 days) No formaldehyde

Formats (mm) 212x1239 240x1461 389x729 | Protecshield™



Creation 55 Solid Clic

Creation 55 Solid Clic is a decorative, flexible, abrasion group T floorcoverings available in tiles and planks, with bevelled edges. It consists in a 0,55 mm thick transparent wear layer, a design film of 2 m width printed in high definition to have more variety in the design and the technology "Duo Core 2.0": combination of a rigid core back layer for easy renovation and a flexible core top layer to provide softness and comfort surface, the whole with a double reinforcement for enhanced durability. The overall thickness is 5 mm. They benefit from a cross-linked polyurethane surface treatment (**Protecshield™**), making maintenance easier and avoiding microscratches.

Creation 55 Solid Clic is an interlocking floorcovering assembled with a vertical system on the short side and a horizontal system on long side for a quick and solid installation. It has a European class (commercial / industrial use) 33/42 according to EN-ISO 10874 and has Bfl-s1 class for smoke emission according to EN 13501-1. **Creation 55 Solid Clic** is made with phthalate free plasticizers (except recycled content). It is 100% recyclable and made with a recycled content up to 55%. It is 100% compliant with REACH. **The product emission rate of organic compounds is < 10 microgram/m³ (TVOC < 28 days - ISO 16000-6).**

To be combined with Gerflor acoustic underlayers

Gerflor Acoustic 15 dB



Code: 1798 - Format: 1m x 15ml

Gerflor Acoustic Plus 19 dB



Code: 0704 - Format: 0.98m x 15.3ml

Gerflor Silence Plus 19 dB



Code: 5949 - Format: 1.18m x 8.5ml

Creation 55 Solid Clic

Description

| | | | |
|--|--------------|-------|---|
| Total thickness | EN ISO 24346 | mm | 5.00 |
| Thickness of wearlayer | EN ISO 24340 | mm | 0.55 |
| Weight | EN ISO 23997 | g/sqm | 7781 |
| Size | EN ISO 24342 | mm | Planks - 212x1238,8 / 239,6x1460,8 Tiles - 388,8x728,7 |
| Number of planks / tiles and sqm per box | EN ISO 24342 | mm | 7-6-6 / 1,84-2,10-1,70 |

Classification

| | | | |
|---|---|-------|--------------|
| Norm / Product specification | - | - | EN ISO 10582 |
| European classification | EN ISO 10874 | class | 33-42 |
| Fire rating | EN 13501-1 | class | Bfl-s1 |
| Static electrical propensity | EN 1815 | kV | < 2 |
| Slip resistance wet: ramp test with oil | EN 16165:2021 - Appendix B (DIN 51 130) | class | R10 |

Performances

| | | | |
|--|----------------|---------|---------------|
| Wear resistance | EN 660.2 | mm³ | < 2.0 |
| Wear group | - | group | T |
| Type Binder content | ISO 10582 | type | I |
| Room impact | NF S 31074 | dB | 79 |
| Impact sound insulation | EN ISO 717-2 | dB | 4 |
| Dimensional stability (norm) | EN ISO 23999 | % | ≤ 0.15 |
| Dimensional stability (average measured value) | - | % | ≈ 0.05 |
| Residual indentation | EN ISO 24343-1 | mm | ≤ 0.10 |
| Castor chair test (type H) | ISO 4918 | - | OK |
| Thermal conductivity | EN ISO 10456 | W/(m.k) | 0.25 |
| Colour fastness | EN ISO 105-B02 | degree | ≥ 6 |
| Surface treatment | - | - | ProtecShield™ |
| Chemical products resistance | EN 423 | - | OK |

Environment / indoor air quality

| | | | |
|--------------------|-------------|--------------|-------------|
| TVOC after 28 days | ISO 16000-6 | microgram/m³ | < 10 |
| Certification | - | - | Floorscore® |

CE marking

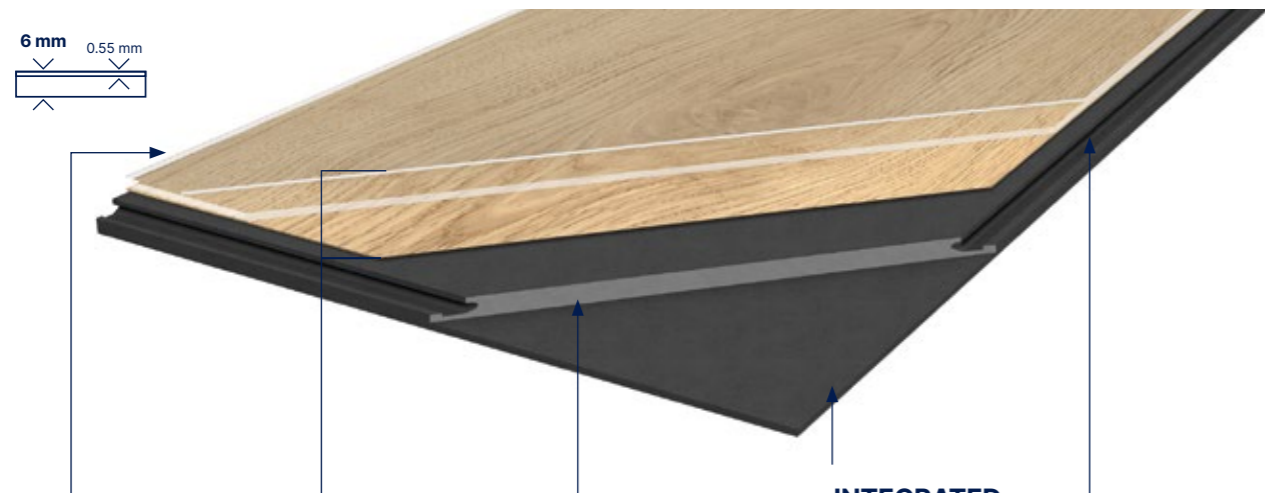


EN 14041



Creation Tiles & planks

Creation 55 Rigid Acoustic



PROTECSHIELD™

ENHANCED PERFORMANCES



Micro scratch resistance



Easy maintenance

ULTRA MATT SURFACE



Natural look

4D DESIGN

CRYSTAL WEAR LAYER



Authentic Look

HIGH DEFINITION PRINTED FILM



Ultra realism

STRUCTURED EMOSS



Ultra realistic surface

BEVELLED EDGES



Tiles & Planks effect

RIGID CORE TECHNOLOGY

Renovation over ceramic tiles 8mm/3mm



Resistance against high temperature variation

INTEGRATED ACOUSTIC UNDERLAY

ACOUSTIC UNDERLAYER



Sound insulation 19dB



Absorbs default of the subfloor (up to 1mm unevenness)

INTERLOCKING SYSTEM

ANGLE TO ANGLE LOCKING SYSTEM



Standard laminate installation

Formats (mm)

177x1219

225x1524

125x750

457x914

Protecshield™



Creation 55 Rigid Acoustic

Creation 55 Rigid Acoustic is a decorative flooring, rigid interlocking with acoustic layer, antistatic, abrasion group T floorcoverings available in tiles and planks, with bevelled edges.

It is made with :

- a 0,55 mm thick transparent wear layer to provide durability
- a high definition printing film to provide an hyper realistic design aspect
- a Full Rigid Board to provide high performances for heavy renovations
- an integrated underlayer 100% recyclable which provides a 19 dB sound reduction market.

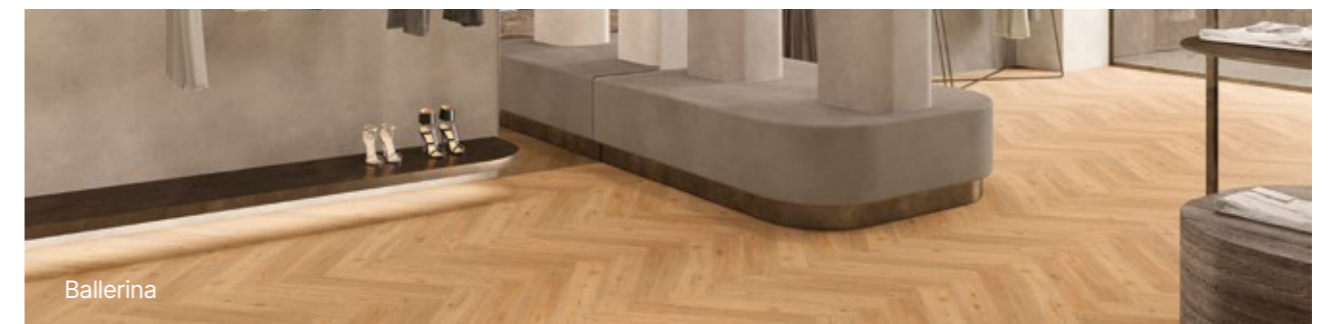
The total thickness of the product is 6 mm. The produce is also using a cross-linked polyurethane surface treatment

(Protecshield™), making maintenance easier, durability longer, protecting from micro scratches, and providing an ultra-mat effect for more realistic look.

Creation 55 Rigid Acoustic is an interlocking floorcovering assembled with an angle/angle locking system to provide robust and easy installation. It has an European class (commercial/industrial) of 33/42 according to EN-ISO 10874 and has Bfl-s1 class for smoke emission according to EN 13501-1.

Creation 55 Rigid Acoustic is made with phthalate free plasticizers. It is 100% recyclable and made with up to 35% of recycled content. It is 100% compliant with REACH.

The product emission rate of organic compounds is < 10 microgram/m³ (TVOC < 28 days – ISO 16000-6).



Ballerina

Creation 55 Rigid Acoustic

Description

| | | | |
|--|--------------|-------|---|
| Total thickness | EN ISO 24346 | mm | 6.00 |
| Thickness of wearlayer | EN ISO 24340 | mm | 0.55 |
| Weight | EN ISO 23997 | g/sqm | 9480 |
| Size | EN ISO 24342 | mm | Planks - 125x750 / 177x1219 / 225x1524 Tiles - 457x914 |
| Number of planks / tiles and sqm per box | EN ISO 24342 | mm | 16-8-5-4 / 1,50-1,73-1,71-1,67 |

Classification

| | | | |
|---|---|-------|--------------|
| Norm / Product specification | - | - | EN ISO 10582 |
| European classification | EN ISO 10874 | class | 33-42 |
| Fire rating | EN 13501-1 | class | Bfl-s1 |
| Static electrical propensity | EN 1815 | kV | < 2 |
| Slip resistance wet: ramp test with oil | EN 16165:2021 – Appendix B (DIN 51 130) | class | R10 |

Performances

| | | | |
|--|----------------|---------|---------------|
| Wear resistance | EN 660.2 | mm³ | < 2.0 |
| Wear group | - | group | T |
| Type Binder content | ISO 10582 | type | I |
| Room impact | NF S 31074 | dB | 81 |
| Impact sound insulation | EN ISO 717-2 | dB | 19 |
| Dimensional stability (norm) | EN ISO 23999 | % | ≤ 0.15 |
| Dimensional stability (average measured value) | - | % | ≤ 0.05 |
| Residual indentation | EN ISO 24343-1 | mm | ≤ 0.10 |
| Castor chair test (type H) | ISO 4918 | - | OK |
| Thermal conductivity | EN ISO 10456 | W/(m.k) | 0.25 |
| Colour fastness | EN ISO 105-B02 | degree | ≥ 6 |
| Surface treatment | - | - | ProtecShield™ |
| Chemical products resistance | EN 423 | - | OK |

Environment / indoor air quality

| | | | |
|--------------------|-------------|--------------|-------------|
| TVOC after 28 days | ISO 16000-6 | microgram/m³ | < 10 |
| Certification | - | - | Floorscore® |

CE marking



EN 14041



100% REACH
Phthalate free



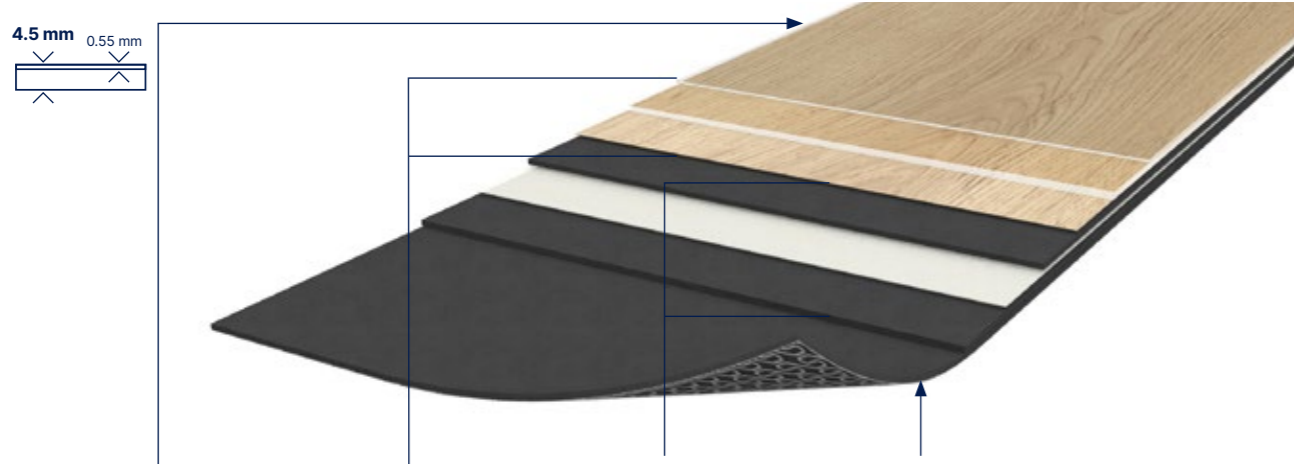
100% RECYCLABLE
Up to 35% recycled content



TVOC emissions below
detection level
(TVOC < 10µg/m³ after 28 days)
No formaldehyde

Creation Tiles & planks

Creation 55 Looselay New



4.5 mm
0.55 mm

PROTECSHIELD™

ENHANCED PERFORMANCES

- Micro scratch resistance
- Easy maintenance

ULTRA MATT SURFACE

- Natural look

4D DESIGN

CRYSTAL WEAR LAYER

- Authentic Look

HIGH DEFINITION PRINTED FILM

- Ultra realism

STRUCTURED EMBOSS

- Ultra realistic surface

BEVELLED EDGES

- Tiles & Planks effect

RESILIENT CORE BOARD

RENOVATION

- Over ceramic tiles 4mm/2mm

DIMENSIONAL STABILITY

- Free adhesive installation up to 30sqm

RESILIENT COMFORT CORE

- Acoustic comfort

- Walking comfort

REMOVABLE

- suitable for raised access Floor

WAFFLE BACKING



Perfect adherence to the subfloor



No moisture if water infiltration



100% Reach Phthalate free



100% Recyclable Up to 35% recycled content



TVOC emissions below detection level (TVOC < 10µg/m³ after 28 days) No formaldehyde

Formats (mm)



Looselay Removable

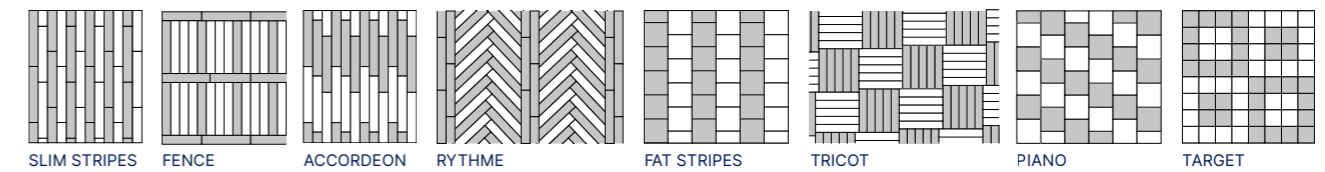
Creation 55 Looselay

Creation 55 Looselay is a synthetic, decorative, flexible, antistatic, abrasion group T floorcovering available in tiles and planks. It consists in a 0.55 mm thick transparent wear layer, a design film and a Duo Core Technology, made with a rigid core back layer reinforced with a fiber veil, combined with a flexible core top layer to provide softness and comfort surface. The overall thickness is 4.5 mm. It also includes anti-skid backing to allow an easy installation and a glue-free installation up to 30 sqm. It benefits from a cross-linked polyurethane surface treatment (**Protecshield™**), making maintenance easier and eliminating the need for initial polishes.

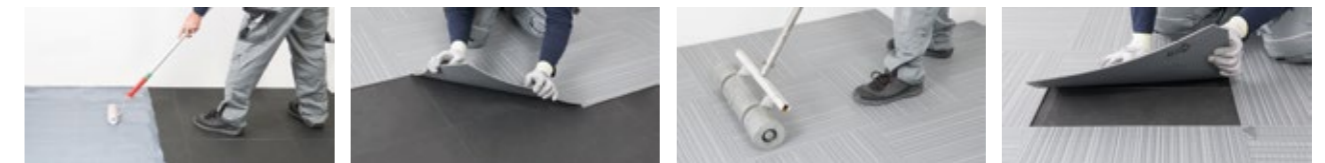
Creation 55 Looselay is a looselay floorcovering, resistant to use (commercial / industrial use) of 33-42 according to EN-ISO 10874 and has Bfl-s1 class for smoke emission according to EN 13501-1.

Creation 55 Looselay is made with phthalate free plasticizers, except recycled content. It is 100% recyclable and made with 35% of recycled content. It is REACH compliant. **The product emission rate of organic compounds is < 10 microgram/m³** (TVOC < 28 days – ISO 16000-6).

Explore the world of possibilities



Quick & Easy to install



Installation with tackifier

Apply planks or tiles

Pressure roller

Easy to replace a plank

Please refer to Gerflor's installation guidelines.

Creation 55 Looselay

Description

| | | | |
|--|--------------|-------|--|
| Total thickness | EN ISO 24346 | mm | 4.50 |
| Thickness of wearlayer | EN ISO 24340 | mm | 0.55 |
| Weight | EN ISO 23997 | g/sqm | 7500 |
| Size | EN ISO 24342 | mm | 229x1220 152x914 600x600 914x914 |
| Number of planks / tiles and sqm per box | - | - | 6 / 1.67 m² 12 / 1.67 m² 6 / 2.16 m² 4 / 3.34 m² |

Classification

| | | | |
|---|---|-------|--------------|
| Norm / Product specification | - | - | EN ISO 10582 |
| European classification | EN ISO 10874 | class | 33-42 |
| Fire rating | EN 13501-1 | class | Bfl-s1 |
| Static electrical propensity | EN 1815 | kV | < 2 |
| Slip resistance wet: ramp test with oil | EN 16165:2021 – Appendix B (DIN 51 130) | class | R10 |

Performances

| | | | |
|--|----------------|---------|---------------|
| Wear resistance | EN 660.2 | mm³ | ≤ 2.0 |
| Wear group | - | group | T |
| Type Binder content | ISO 10582 | type | 1 |
| Room impact | NF S 31074 | dB | 74 |
| Room sound insulation | EN ISO 717-2 | dB | 7 |
| Dimensional stability (norm) | EN ISO 23999 | % | ≤ 0.15 |
| Dimensional stability (average measured value) | EN ISO 23999 | % | ≈ 0.05 |
| Residual indentation | EN ISO 24343-1 | mm | ≤ 0.10 |
| Castor chair test (type H) | ISO 4918 | - | OK |
| Thermal conductivity | EN ISO 10456 | W/(m.k) | 0.25 |
| Colour fastness | EN ISO 105-B02 | degree | ≥ 6 |
| Surface treatment | - | - | ProtecShield™ |
| Chemical products resistance | EN ISO 26987 | - | OK |

Environment / indoor air quality

| | | | |
|--------------------|-------------|--------------|------|
| TVOC after 28 days | ISO 16000-6 | microgram/m³ | < 10 |
|--------------------|-------------|--------------|------|

CE marking

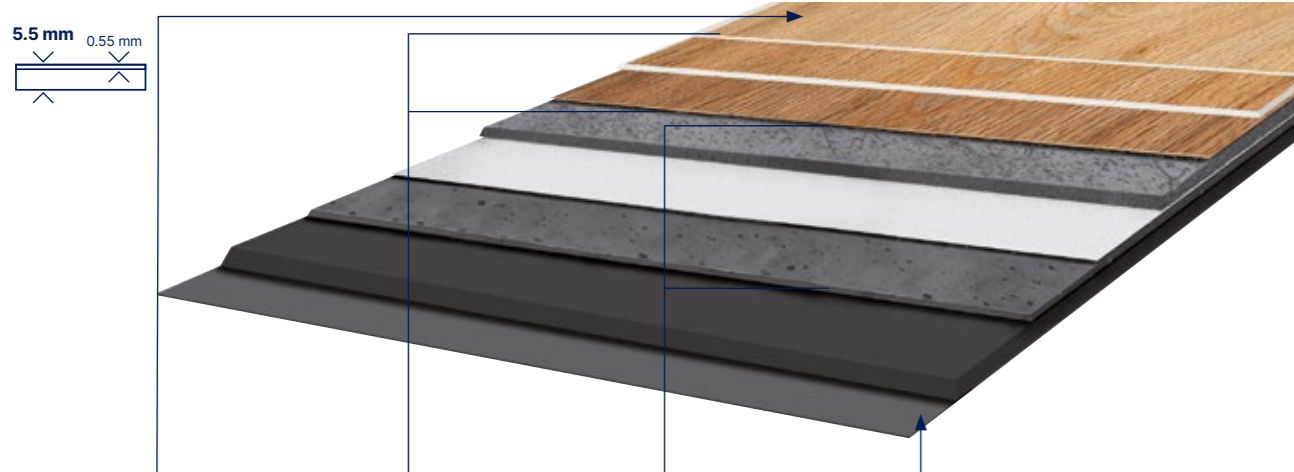


EN 14041



Creation Tiles & planks

Creation 55 Looselay Acoustic New



5.5 mm
0.55 mm

PROTECSHIELD™

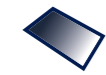
ENHANCED PERFORMANCES

Micro scratch resistance



Easy maintenance

ULTRA MATT SURFACE



Natural look

4D DESIGN

CRYSTAL WEAR LAYER



Authentic Look

HIGH DEFINITION PRINTED FILM



Ultra realism

STRUCTURED EMOSS



Ultra realistic surface

BEVELLED EDGES



Tiles & Planks effect

RESILIENT CORE BOARD

RENOVATION



Over ceramic tiles
4mm/2mm

DIMENSIONAL STABILITY



Free adhesive
installation up to
30sqm

RESILIENT COMFORT CORE



Acoustic comfort



Walking comfort

REMOVABLE



suitable for raised
access Floor

WAFFLE BACKING



Perfect adherence
to the subfloor



No moisture if water
infiltration

INTEGRATED ACOUSTIC UNDERLAY

ACOUSTIC UNDERLAYER



Sound insulation 19dB



100% Reach
Phthalate free

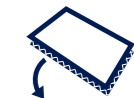


100% Recyclable
Up to 35% recycled content



TVOC emissions below
detection level
(tvoc < 10µg/m³ after 28 days)
No formaldehyde

Formats (mm)



Looselay
Removable

Creation 55 Looselay Acoustic

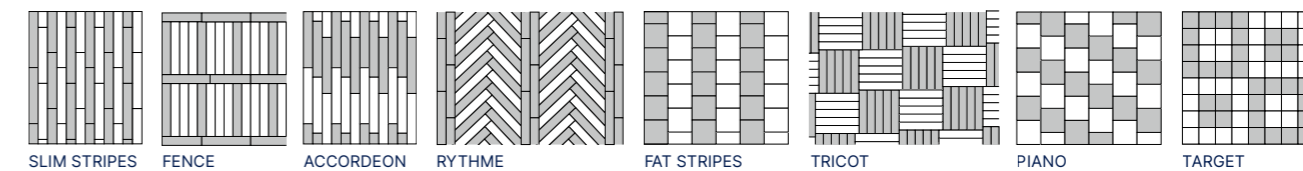
Creation 55 Looselay Acoustic is a synthetic, decorative, flexible, antistatic, abrasion group T floorcoverings available in tiles and planks with bevelled edges. It consists in a 0.55 mm thick transparent wear layer, a design film and a Duo Core Technology, made with a rigid core back layer reinforced with a fiber veil, combined with a flexible core top layer to provide softness and comfort surface. The backing integrates an acoustic core reaching 19 dB acoustic impact noise reduction. The overall thickness is 5.5 mm. They benefit from a cross-linked polyurethane surface treatment (**Protecshield™**), making maintenance easier and

eliminating the need for initial polishes.

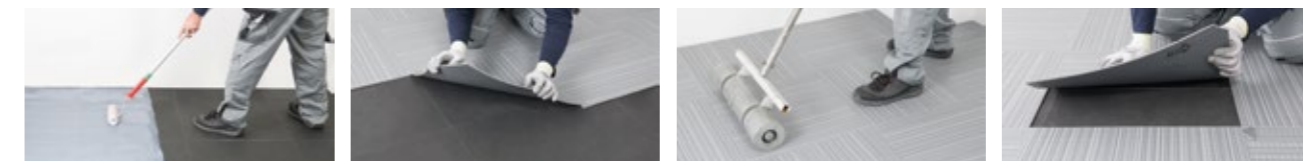
Creation 55 Looselay Acoustic is a looselay floorcovering, resistant to use (commercial / industrial use) of 33-42 according to EN-ISO 10874 and has Bfl-s1 class for smoke emission according to EN 13501-1.

Creation 55 Looselay Acoustic is made with phthalate free plasticizers, except recycled content. It is 100% recyclable and made with 35% of recycled content. It is REACH compliant. **The product emission rate of organic compounds is < 10 microgram/m³ (TVOC < 28 days - ISO 16000-6).**

Explore the world of possibilities



Quick & Easy to install



Installation with tackifier

Apply planks or tiles

Pressure roller

Easy to replace a plank

Please refer to Gerflor's installation guidelines.

Creation 55 Looselay Acoustic

Description

| | | | |
|--|--------------|-------|------------------------------|
| Total thickness | EN ISO 24346 | mm | 5.50 |
| Thickness of wearlayer | EN ISO 24340 | mm | 0.55 |
| Weight | EN ISO 23997 | g/sqm | 7600 |
| Size | EN ISO 24342 | mm | 228.6×1220 600×600 |
| Number of planks / tiles and sqm per box | - | - | 8 / 2.23 m² 6 / 2.16 m² |

Classification

| | | | |
|---|---|-------|-----------|
| Norm / Product specification | - | - | ISO 10582 |
| European classification | EN ISO 10874 | class | 33-42 |
| Fire rating | EN 13501-1 | class | Bfl-s1 |
| Static electrical propensity | EN 1815 | kV | < 2 |
| Slip resistance wet: ramp test with oil | EN 16165:2021 - Appendix B (DIN 51 130) | class | R10 |

Performances

| | | | |
|--|----------------|---------|---------------|
| Wear resistance | EN 660.2 | mm³ | ≤ 2.0 |
| Wear group | - | group | T |
| Type Binder content | EN ISO 10582 | type | 1 |
| Room impact | NF S 31074 | dB | 70 |
| Room sound insulation | EN ISO 717-2 | dB | 19 |
| Dimensional stability (norm) | EN ISO 23999 | % | ≤ 0.15 |
| Dimensional stability (average measured value) | EN ISO 23999 | % | ≈ 0.05 |
| Residual indentation | EN ISO 24343-1 | mm | ≤ 0.10 |
| Castor chair test (type H) | ISO 4918 | - | OK |
| Thermal conductivity | EN ISO 10456 | W/(m.k) | 0.25 |
| Colour fastness | EN ISO 105-B02 | degree | ≥ 6 |
| Surface treatment | - | - | ProtecShield™ |
| Chemical products resistance | EN ISO 26987 | - | OK |

Environment / indoor air quality

| | | | |
|--------------------|-------------|--------------|------|
| TVOC after 28 days | ISO 16000-6 | microgram/m³ | < 10 |
|--------------------|-------------|--------------|------|

CE marking



EN 14041

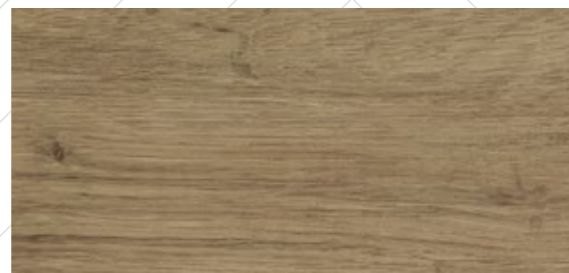


Creation Tiles & planks

Creation 55 HB 



Bostonian Oak Beige



Quartet 0503
DB 152 x 762 | RIGID AC 125 x 750



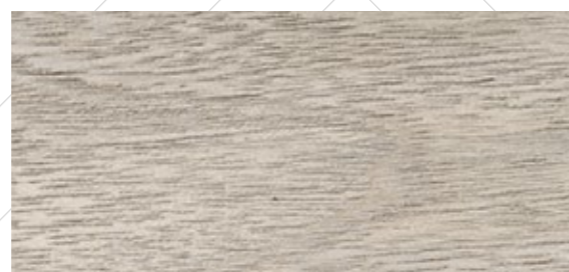
Quartet Fauve 0859
DB 152 x 762



Ballerina 0347
DB 152 x 762 | RIGID AC 125 x 750



Twist 0504
DB 152 x 762



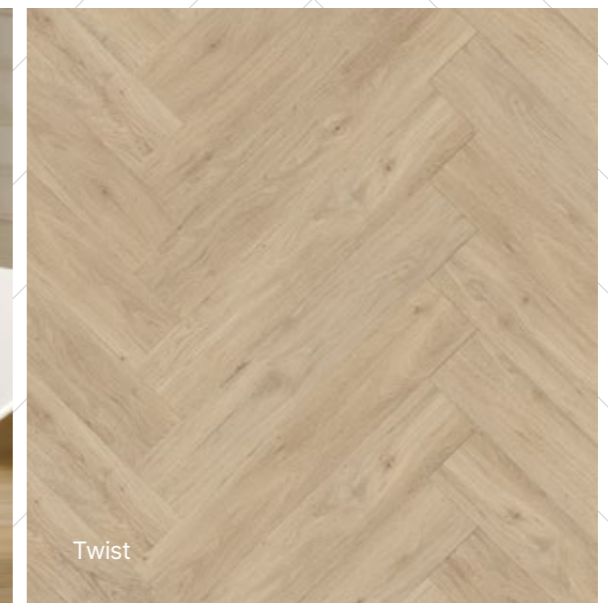
Bostonian Oak Beige 0853
DB 152 x 762



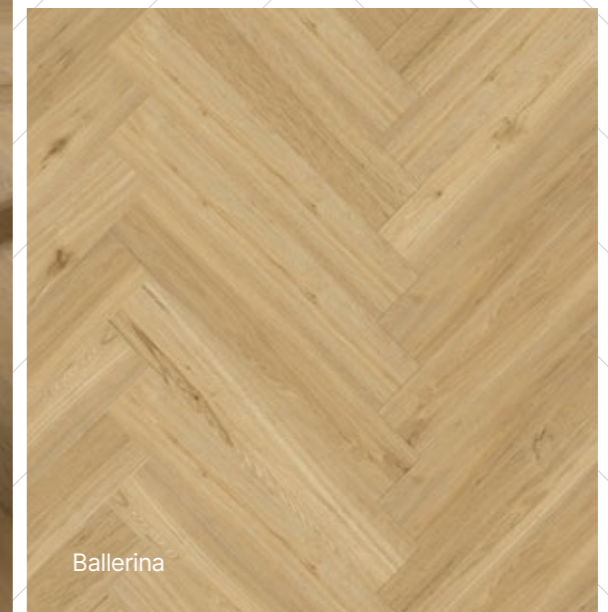
Quartet & Quartet Fauve

DB
Creation 55
(Dry Back)

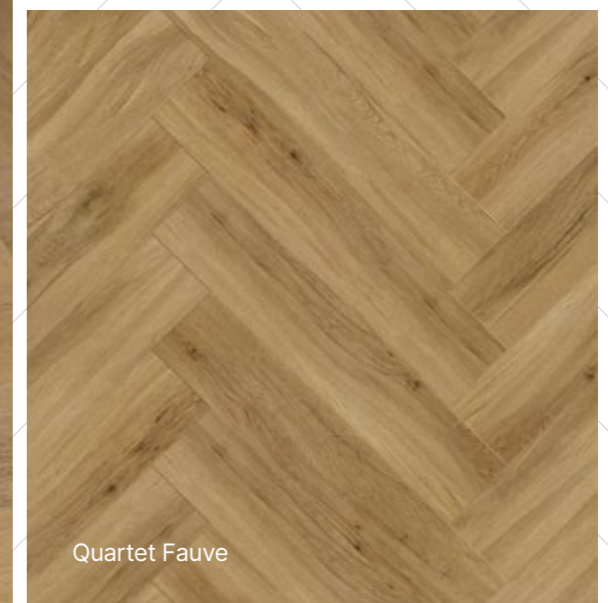
RIGID AC
Creation 55
Rigid Acoustic



Twist



Ballerina



Quartet Fauve

Creation Tiles & planks

Creation 55 Looselay HB 

LL
Creation 55 Looselay



Tamo Natural / Tamo Clear / Tamo Light Brown



Gentleman Cream 1563 **New**
LL 152 x 914



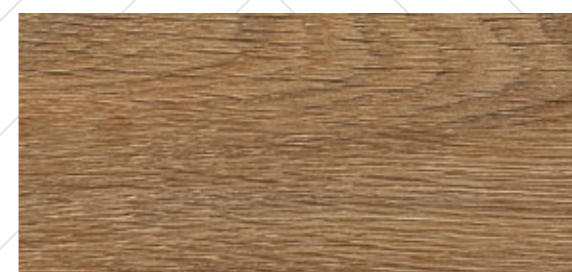
Gentleman Grey 1058 **New**
LL 152 x 914



Tamo Light 1559 **New**
LL 152 x 914



Tamo Clear 1567 **New**
LL 152 x 914



Tamo Light Brown 1568 **New**
LL 152 x 914



Creation
Tiles & planks

Creation Tiles & planks

Creation 55 EIR



Emboss
in register

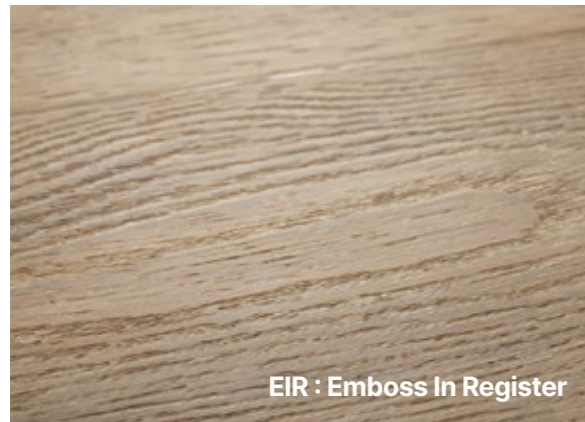


Emboss
in register

DB
Creation 55
(Dry Back)

SOLID CLIC
Creation 55
Solid Clic

RIGID AC
Creation 55
Rigid Acoustic



EIR : Emboss In Register



Charming Oak Brown 1280
DB 184 x 1219 | SOLID CLIC 212 x 1239 | RIGID AC 177 x 1219



Lounge Oak Chestnut 1274
DB 230 x 1500 | SOLID CLIC 240 x 1461 | RIGID AC 225 x 1524



White Lead Oak Dark Beige 1289
DB 184 x 1219



Charming Oak Nature 1277
DB 184 x 1219 | SOLID CLIC 212 x 1239 | RIGID AC 177 x 1219



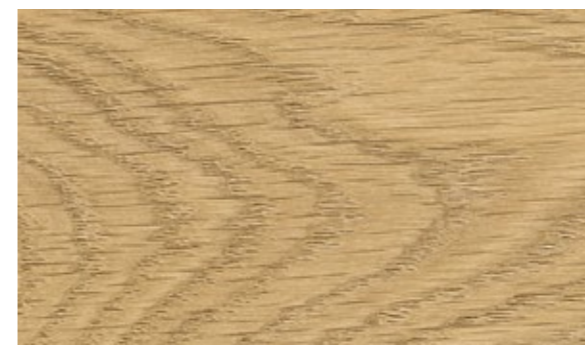
Lounge Oak Golden 1271
DB 230 x 1500 | SOLID CLIC 240 x 1461 | RIGID AC 225 x 1524



White Lead Oak Blond 1288
DB 184 x 1219



Charming Oak Beige 1278
DB 184 x 1219 | SOLID CLIC 212 x 1239 | RIGID AC 177 x 1219



Lounge Oak Natural 1273
DB 230 x 1500 | SOLID CLIC 240 x 1461 | RIGID AC 225 x 1524



White Lead Oak Shadow Grey 1290
DB 184 x 1219



Charming Oak Grey 1279
DB 184 x 1219 | SOLID CLIC 212 x 1239 | RIGID AC 177 x 1219



Lounge Oak Beige 1272
DB 230 x 1500 | SOLID CLIC 240 x 1461 | RIGID AC 225 x 1524



Charming Oak Brown

Creation
Tiles & planks

Creation Tiles & planks

Creation 55

DB
Creation 55
(Dry Back)

SOLID CLIC
Creation 55
Solid Clic

RIGID AC
Creation 55
Rigid Acoustic

LL
Creation 55
Looselay

LL AC
Creation 55
Looselay Acoustic



Brownie 0459
DB 184 × 1219



Buffalo 0457
DB 184 × 1219 | **SOLID CLIC** 212 × 1239



Long Board 0455
DB 184 × 1219 | **SOLID CLIC** 212 × 1239 | **RIGID AC** 177 × 1219
LL 229 × 1220 | **LL AC** 229 × 1220



Bostonian Oak 0871
DB 184 × 1219 | **SOLID CLIC** 212 × 1239 | **RIGID AC** 177 × 1219



Amarante 0579
DB 184 × 1219



Ballerina 0347
DB 184 × 1219 / 152 × 762 | **SOLID CLIC** 212 × 1239
RIGID AC 177 × 1219 / 125 × 750 | **LL** 229 × 1220 | **LL AC** 229 × 1220



Michigan 0461
DB 184 × 1219 | **SOLID CLIC** 212 × 1239 | **RIGID AC** 177 × 1219



Cedar Brown 0850
DB 230 × 1500 | **SOLID CLIC** 240 × 1461 | **RIGID AC** 225 × 1524



Quartet Honey 0870
DB 184 × 1219 | **SOLID CLIC** 212 × 1239 | **RIGID AC** 177 × 1219



Quartet 0503
DB 184 × 1219 / 152 × 762 | **SOLID CLIC** 212 × 1239
RIGID AC 177 × 1219 / 125 × 750



Bostonian Oak Honey 0851
DB 184 × 1219 | **SOLID CLIC** 212 × 1239 | **RIGID AC** 177 × 1219



Honey Oak 0441
DB 184 × 1219 | **SOLID CLIC** 212 × 1239 | **RIGID AC** 177 × 1219
LL 229 × 1220



Honey Oak / Carmel

Creation
Tiles & planks

Creation Tiles & planks

Creation 55

LL
Creation 55 Looselay

LL AC
Creation 55 Looselay
Acoustic



Tamo Light Brown 1568 **New**
LL 229x1220 / 152x914



Tamo Light 1559 **New**
LL 229x1220 / 152x914 | LL AC 229x1220



Tamo Dainty 1560 **New**
LL 229x1220 | LL AC 229x1220



Tamo Natural 1561 **New**
LL 229x1220 | LL AC 229x1220



Tamo Clear 1567 **New**
LL 229x1220 / 152x914



Tamo Dainty

Creation
Tiles & planks

Creation Tiles & planks

Creation 55



Rustic Oak 0445
DB 184 × 1219 | **SOLID CLIC** 212 × 1239 | **RIGID AC** 177 × 1219



Cambridge 0465
DB 184 × 1219 | **SOLID CLIC** 212 × 1239



Quartet Fauve 0859
DB 184 × 1219 / 152 × 762 | **SOLID CLIC** 212 × 1239
RIGID AC 177 × 1219



Swiss Oak Golden 0796
DB 184 × 1219 | **SOLID CLIC** 212 × 1239 | **RIGID AC** 177 × 1219
LL 229 × 1220



Cambridge

DB
 Creation 55
 (Dry Back)

SOLID CLIC
 Creation 55
 Solid Clic

RIGID AC
 Creation 55
 Rigid Acoustic

LL
 Creation 55
 Looselay

LL AC
 Creation 55
 Looselay Acoustic



Mansfield Natural 0069
DB 184 × 1219



Swiss Oak Beige 0848
DB 184 × 1219 | **SOLID CLIC** 212 × 1239 | **RIGID AC** 177 × 1219



Twist 0504
DB 184 × 1219 / 152 × 762 | **SOLID CLIC** 212 × 1239
RIGID AC 177 × 1219 | **LL** 229 × 1220



Salento Light Grey 1287
DB 184 × 1219 | **SOLID CLIC** 212 × 1239 | **RIGID AC** 177 × 1219



Bostonian Oak Beige 0853
DB 184 × 1219 / 152 × 762 | **SOLID CLIC** 212 × 1239
RIGID AC 177 × 1219



Malua Bay 0448
DB 184 × 1219 | **SOLID CLIC** 212 × 1239 | **RIGID AC** 177 × 1219



Cedar Pure 0849
DB 230 × 1500 | **SOLID CLIC** 240 × 1461 | **RIGID AC** 225 × 1524



Salento Beige 1286
DB 184 × 1219 | **SOLID CLIC** 212 × 1239 | **RIGID AC** 177 × 1219

Creation Tiles & planks

Creation 55



Swiss Oak Pearl 0846
DB 184 × 1219 | **SOLID CLIC** 212 × 1239 | **RIGID AC** 177 × 1219



Oxford 0061
DB 184 × 1219 | **SOLID CLIC** 212 × 1239



Palissandro Grey 1281
DB 230 × 1500 | **SOLID CLIC** 240 × 1461



Amador 0447
DB 184 × 1219 | **SOLID CLIC** 212 × 1239 | **RIGID AC** 177 × 1219



White Lime 0584
DB 184 × 1219 | **SOLID CLIC** 212 × 1239 | **RIGID AC** 177 × 1219



Mansfield Light 0068
DB 184 × 1219



Arena 0060
DB 184 × 1219 | **SOLID CLIC** 212 × 1239



Ranch 0456
DB 184 × 1219 / 230 × 1500 | **SOLID CLIC** 212 × 1239 / 240 × 1461
RIGID AC 177 × 1219 | **LL** 229 × 1220 | **LL AC** 229 × 1220



Palissandro Beige

DB
 Creation 55
 (Dry Back)

SOLID CLIC
 Creation 55
 Solid Clic

RIGID AC
 Creation 55
 Rigid Acoustic

LL
 Creation 55
 Looselay

LL AC
 Creation 55
 Looselay Acoustic



Stripe Oak Ice 0858
DB 184 × 1219 | **SOLID CLIC** 212 × 1239



Palissandro Beige 1282
DB 230 × 1500 | **SOLID CLIC** 240 × 1461



Paint Wood Taupe 0856
DB 184 × 1219 | **SOLID CLIC** 212 × 1239

Creation Tiles & planks

Creation 55



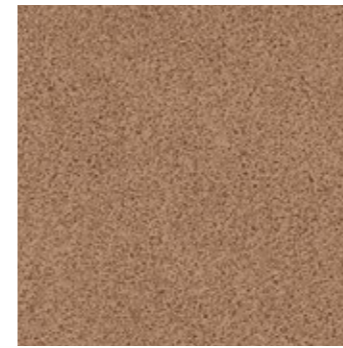
Urban Street Terra / Gentleman Terra

DB
Creation 55
(Dry Back)

SOLID CLIC
Creation 55
Solid Clic

RIGID AC
Creation 55
Rigid Acoustic

LL
Creation 55
Looselay



Urban Street Terra 1566
New
LL 600 × 600



Gentleman Terra 1564
New
LL 600 × 600



Curton Stone Light Grey 1275
DB 457 × 914 | **SOLID CLIC** 389 × 729
RIGID AC 457 × 914



Urban Street Cream 1565
New
LL 600 × 600



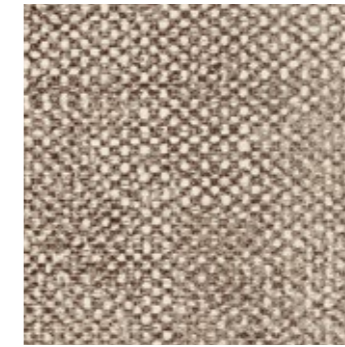
Gentleman Cream 1563
New
LL 600 × 600 / 152 × 914



Urban Street Beige 1285
DB 914 × 914



Curton Stone Light Beige 1276
DB 457 × 914 | **SOLID CLIC** 389 × 729
RIGID AC 457 × 914



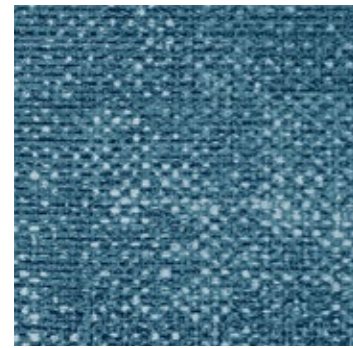
Fabrik Mix Jute 1268
DB 610 × 610 | **SOLID CLIC** 389 × 729



Bloom Uni Taupe 0868
DB 610 × 610 | **SOLID CLIC** 389 × 729
RIGID AC 457 × 914 | **LL** 600 × 600

Creation Tiles & planks

Creation 55



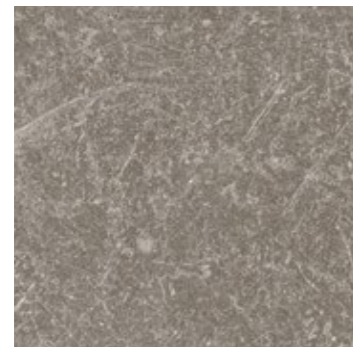
Fabrik Mix Indigo 1270
DB 610 x 610



Silver City 0373
DB 610 x 610



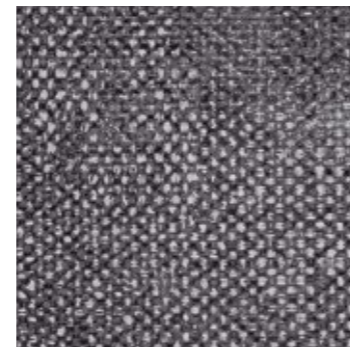
Parker Station 0374
DB 610 x 610 | **SOLID CLIC** 389 x 729
RIGID AC 457 x 914 | LL 914 x 914



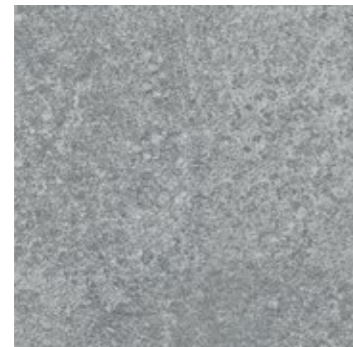
Carmel 0618
DB 457 x 914 | **SOLID CLIC** 389 x 729
RIGID AC 457 x 914



Riverside 0436
DB 610 x 610 | **SOLID CLIC** 389 x 729
RIGID AC 457 x 914 | LL 600 x 600



Fabrik Mix Dark Grey 1269
DB 610 x 610 | **SOLID CLIC** 389 x 729



Bloom Uni Grey 0869
DB 610 x 610 | **SOLID CLIC** 389 x 729
RIGID AC 457 x 914



Urban Street Medium 1284
DB 914 x 914 | **SOLID CLIC** 389 x 729
LL 914 x 914 | **LL AC** 600 x 600



Urban Street Light 1283
DB 914 x 914 | **SOLID CLIC** 389 x 729
LL 914 x 914 | **LL AC** 600 x 600



Gentleman Grey / Urban Street Light

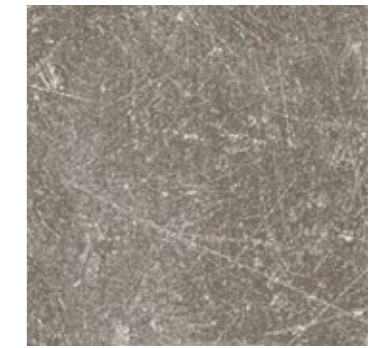
DB
Creation 55
(Dry Back)

SOLID CLIC
Creation 55
Solid Clic

RIGID AC
Creation 55
Rigid Acoustic

LL
Creation 55
Looselay

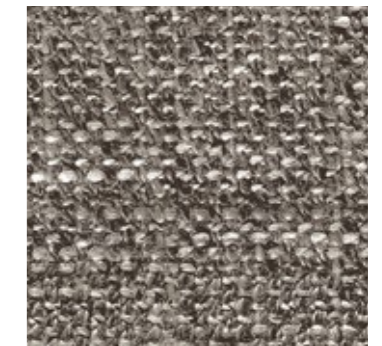
LL AC
Creation 55
Looselay Acoustic



Dock Taupe 0087
New
LL 914 x 914



Gentleman Grey 1058
New
LL 600 x 600 / 152x914



Gentleman Taupe 1083
New
LL 600 x 600

Creation Tiles & planks

Creation 55

| Code | Color Design | Dry Back | Solid Clic | Rigid Acoustic | Looselay | Looselay Acoustic | Skirting Matching Design | Coverstrip Matching Design | Emboss | NCS | LRV |
|------|----------------------------|-------------------------|------------|-------------------------|-------------------------|-------------------|--------------------------|----------------------------|----------------------|-----------|------|
| | | | | | | | | | | | |
| 0447 | Amador | 184 x 1219 | 212 x 1239 | 177 x 1219** | - | - | S004 | S004 | Saw Effect | 5005-Y50R | 25.1 |
| 0579 | Amarante | 184 x 1219 | - | - | - | - | S005 | S001 | Brushed | 5010-Y30R | 21.3 |
| 0060 | Arena | 184 x 1219 | 212 x 1239 | - | - | - | S026 | S001 | Saw Effect | 4005-Y20R | 37.2 |
| 0347 | Ballerina | 184 x 1219 152 x 762 | 212 x 1239 | 177 x 1219 125 x 750 | 229 x 1220 | 229 x 1220 | S008 | S008 | Natural | 4040-Y20R | 28.4 |
| 0869 | Bloom Uni Grey | 610 x 610 | 389 x 729 | 457 x 914 | - | - | S071 | S071 | Hammered | 5005-B20G | 23.2 |
| 0868 | Bloom Uni Taupe | 610 x 610 | 389 x 729 | 457 x 914 | 600 x 600 | - | S072 | S072 | Hammered | 4502-Y | 28.5 |
| 0871 | Bostonian Oak | 184 x 1219 | 212 x 1239 | 177 x 1219 | - | - | S016 | S016 | Natural | 5020-Y20R | 26.4 |
| 0853 | Bostonian Oak Beige | 184 x 1219 152 x 762 | 212 x 1239 | 177 x 1219 | - | - | S017 | S017 | Natural | 4005-Y20R | 36.7 |
| 0851 | Bostonian Oak Honey | 184 x 1219 | 212 x 1239 | 177 x 1219 | - | - | S019 | S019 | Natural | 4020-Y20R | 29.8 |
| 0459 | Brownie | 184 x 1219 | - | - | - | - | S073 | S001 | Natural | 6020-Y30R | 10.7 |
| 0457 | Buffalo | 184 x 1219 | 212 x 1239 | - | - | - | S075 | S001 | Brushed | 6010-Y10R | 16.3 |
| 0465 | Cambridge | 184 x 1219 | 212 x 1239 | - | - | - | S065 | S001 | Natural | 3030-Y20R | 39.8 |
| 0618 | Carmel | 457 x 914 | 389 x 729 | 457 x 914 | - | - | S020 | S020 | Hammered | 6005-Y50R | 19.2 |
| 0850 | Cedar Brown | 230 x 1500 | 240 x 1461 | 225 x 1524 | - | - | S024 | S024 | Natural | 5020-Y20R | 21.3 |
| 0849 | Cedar Pure | 230 x 1500 | 240 x 1461 | 225 x 1524 | - | - | S025 | S025 | Natural | 3010-Y30R | 39.8 |
| 1278 | Charming Oak Beige | 184 x 1219 | 212 x 1239 | 177 x 1219 | - | - | S188 | S001 | EIR - Charming Oak | 4010-Y50R | 31.5 |
| 1280 | Charming Oak Brown | 184 x 1219 | 212 x 1239 | 177 x 1219 | - | - | S191 | S001 | EIR - Charming Oak | 6010-Y70R | 13.4 |
| 1279 | Charming Oak Grey | 184 x 1219 | 212 x 1239 | 177 x 1219 | - | - | S190 | S001 | EIR - Charming Oak | 3000-N | 36.2 |
| 1277 | Charming Oak Nature | 184 x 1219 | 212 x 1239 | 177 x 1219 | - | - | S192 | S001 | EIR - Charming Oak | 5010-Y30R | 18.6 |
| 1276 | Curton Stone Light Beige | 457 x 914 | 389 x 729 | 457 x 914 * | - | - | S184 | S184 | Stone | 2010-Y40R | 48.9 |
| 1275 | Curton Stone Light Grey | 457 x 914 | 389 x 729 | 457 x 914 * | - | - | S185 | S185 | Stone | 3005-Y20R | 45.9 |
| 0087 | Dock Taupe | - | - | - | 914 x 914 | - | S020 | C019 | Hammered | 6005-Y50R | 19.2 |
| 1269 | Fabrik Mix Dark Grey | 610 x 610 | 389 x 729 | - | - | - | S165 | S001 | Hammered | 6005-R50B | 13.4 |
| 1270 | Fabrik Mix Indigo | 610 x 610 | - | - | - | - | S166 | S001 | Hammered | 5020-B | 17.1 |
| 1268 | Fabrik Mix Jute | 610 x 610 | 389 x 729 | - | - | - | S167 | S001 | Hammered | 5005-Y50R | 26.3 |
| 1563 | Gentleman Cream | - | - | - | 600 x 600 152 x 914 | - | - | - | Textile | 3010-Y40R | 40.1 |
| 1058 | Gentleman Grey | - | - | - | 600 x 600 152 x 914 | - | - | - | Textile | 7500-N | 12.7 |
| 1083 | Gentleman Taupe | - | - | - | 600 x 600 | - | - | - | Textile | 5502-Y | 21.2 |
| 1564 | Gentleman Terra | - | - | - | 600 x 600 | - | - | - | Textile | 4020-Y30R | 27 |
| 0441 | Honey Oak | 184 x 1219 | 212 x 1239 | 177 x 1219 | 229 x 1220 | - | S033 | S033 | Natural | 4020-Y20R | 27.7 |
| 0455 | Long Board | 184 x 1219 | 212 x 1239 | 177 x 1219 | 229 x 1220 | 229 x 1220 | S034 | S034 | Brushed | 4010-Y30R | 24.8 |
| 1272 | Lounge Oak Beige | 230 x 1500 | 240 x 1461 | 225 x 1524 | - | - | S168 | S001 | EIR - Lounge Oak | 4010-Y30R | 33.9 |
| 1274 | Lounge Oak Chestnut | 230 x 1500 | 240 x 1461 | 225 x 1524 | - | - | S192 | S001 | EIR - Lounge Oak | 5010-Y30R | 20.5 |
| 1271 | Lounge Oak Golden | 230 x 1500 | 240 x 1461 | 225 x 1524 | - | - | S189 | S001 | EIR - Lounge Oak | 5020-Y20R | 23.8 |
| 1273 | Lounge Oak Natural | 230 x 1500 | 240 x 1461 | 225 x 1524 | - | - | S189 | S001 | EIR - Lounge Oak | 4020-Y30R | 30.2 |
| 0448 | Malua Bay | 184 x 1219 | 212 x 1239 | 177 x 1219 | - | - | S035 | S035 | Brushed | 2502-Y | 47.1 |
| 0068 | Mansfield Light | 184 x 1219 | - | - | - | - | S190 | S001 | Brushed | 4502-Y | 31.8 |
| 0069 | Mansfield Natural | 184 x 1219 | - | - | - | - | S188 | S001 | Brushed | 3010-Y20R | 37.7 |
| 0461 | Michigan | 184 x 1219 | 212 x 1239 | 177 x 1219 | - | - | S038 | S038 | Brushed | 6020-Y30R | 13.5 |
| 0061 | Oxford | 184 x 1219 | 212 x 1239 | - | - | - | S043 | S001 | Brushed | 5502-Y | 19.2 |
| 0856 | Paint Wood Taupe | 184 x 1219 | 212 x 1239 | - | - | - | S046 | S001 | Brushed | 5502-Y | 18.9 |
| 1282 | Palissandro Beige | 230 x 1500 | 240 x 1461 | - | - | - | S176 | S001 | Stone | 4010-Y50R | 32.1 |
| 1281 | Palissandro Grey | 230 x 1500 | 240 x 1461 | - | - | - | S177 | S001 | Stone | 4005-R20B | 38.4 |
| 0374 | Parker Station | 610 x 610 | 389 x 729 | 457 x 914 | 914 x 914 | - | S047 | S047 | Hammered | 8000-N | 12.6 |
| 0503 | Quartet | 184 x 1219 152 x 762 | 212 x 1239 | 125 x 750 | - | - | S056 | S056 | Natural | 5020-Y20R | 19.4 |
| 0859 | Quartet Fauve | 184 x 1219 152 x 762 | 212 x 1239 | 177 x 1219 | - | - | S057 | S057 | Natural | 4030-Y20R | 23.9 |
| 0870 | Quartet Honey | 184 x 1219 | 212 x 1239 | 177 x 1219 | - | - | S058 | S058 | Natural | 3040-Y20R | 28.2 |
| 0456 | Ranch | 230 x 1500 | 240 x 1461 | 177 x 1219 | 229 x 1220 | 229 x 1220 | S053 | S053 | Brushed | 5005-Y50R | 23.5 |
| 0436 | Riverside | 610 x 610 | 389 x 729 | 457 x 914 | 600 x 600 | - | S032 | S032 | Hammered | 6502-Y | 16.7 |
| 0445 | Rustic Oak | 184 x 1219 | 212 x 1239 | 177 x 1219 | - | - | S062 | S062 | Natural | 4030-Y20R | 20.4 |
| 1286 | Salento Beige | 184 x 1219 | 212 x 1239 | 177 x 1219 | - | - | S186 | S186 | Natural | 2010-Y40R | 37.0 |
| 1287 | Salento Light Grey | 184 x 1219 | 212 x 1239 | 177 x 1219 | - | - | S187 | S187 | Natural | 2005-Y40R | 46.6 |
| 0373 | Silver City | 610 x 610 | - | - | - | - | S048 | S001 | Hammered | 6502-Y | 19.1 |
| 0858 | Stripe Oak Ice | 184 x 1219 | 212 x 1239 | - | - | - | S009 | S001 | Natural | 3502-Y | 37.3 |
| 0848 | Swiss Oak Beige | 184 x 1219 | 212 x 1239 | 177 x 1219 | - | - | S011 | S011 | Natural | 3010-Y30R | 40.1 |
| 0796 | Swiss Oak Golden | 184 x 1219 | 212 x 1239 | 177 x 1219 | 229 x 1220 | - | S015 | S015 | Natural | 4030-Y20R | 25.8 |
| 0846 | Swiss Oak Pearl | 184 x 1219 | 212 x 1239 | 177 x 1219 | 229 x 1220 | 229 x 1220 | S014 | S014 | Natural | 3502-Y | 36.1 |
| 1567 | Tamo Clear | - | - | - | 229 x 1220 152 x 914 | - | S168 | C006 | Natural | 3020-Y20R | 33.3 |
| 1560 | Tamo Dainty | - | - | - | 229 x 1220 | 229 x 1220 | S001 | S001 | Natural | 4020-Y30R | 24 |
| 1559 | Tamo Light | - | - | - | 229 x 1220 152 x 914 | 229 x 1220 | S188 | C005 | Natural | 3010-Y20R | 36.6 |
| 1568 | Tamo Light Brown | - | - | - | 229 x 1220 152 x 914 | - | S202 | C003 | Natural | 5020-Y30R | 17.2 |
| 1561 | Tamo Natural | - | - | - | 229 x 1220 | 229 x 1220 | S016 | C004 | Natural | 4020-Y20R | 24.4 |
| 0504 | Twist | 184 x 1219 152 x 762 | 212 x 1239 | 177 x 1219 | 229 x 1220 | - | S039 | S039 | Natural | 3010-Y30R | 38.9 |
| 1285 | Urban Street Beige | 914 x 914 | - | - | - | - | S178 | S001 | Hammered | 4005-Y50R | 31.2 |
| 1565 | Urban Street Cream | - | - | - | 600 x 600 | - | S178 | S001 | Hammered | 2005-Y20R | 50 |
| 1283 | Urban Street Light | 914 x 914 | 389 x 729 | - | 914 x 914 | 600 x 600 | S094 | S001 | Hammered | 3502-R | 42.3 |
| 1284 | Urban Street Medium | 914 x 914 | 389 x 729 | - | 914 x 914 | 600 x 600 | S180 | S001 | Hammered | 4502-R | 26.5 |
| 1566 | Urban Street Terra | - | - | - | 600 x 600 | - | S001 | S001 | Hammered | 5020-Y50R | 21.6 |
| 1288 | White Lead Oak Blond | 184 x 1219 | - | - | - | - | S181 | S001 | EIR - White Lead Oak | 3010-Y40R | 29.6 |
| 1289 | White Lead Oak Dark Beige | 184 x 1219 | - | - | - | - | S182 | S001 | EIR - White Lead Oak | 5010-Y10R | 25.3 |
| 1290 | White Lead Oak Shadow Grey | 184 x 1219 | - | - | - | - | S190 | S001 | EIR - White Lead Oak | 3502-Y | 34.6 |
| 0584 | White Lime | 184 x 1219 | 212 x 1239 | 177 x 1219 ** | - | - | S074 | S074 | Saw Effect | 4005-Y20R | 36.0 |

* Hammered emboss in Rigid Acoustic
** Brushed emboss in Rigid Acoustic / Looselay / Looselay Acoustic

S001: White
S001: Aluminium

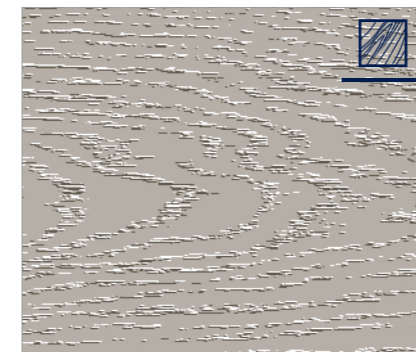
Packaging

| Product size (mm) | m ² /box | m ² /palette |
|--------------------------------------|---------------------|-------------------------|
| Creation 55 (Dry Back) Trend | | |
| 184.15 x 1219.2 | 3.36 | 215.04 |
| 230 x 1500 | 3.11 | 214.59 |
| 152 x 762 | 3.82 | 213.92 |
| 457.2 x 914.4 | 3.76 | 218.08 |
| 609.6 x 609.6 | 3.35 | 187.60 |
| Creation 55 (Dry Back) Design | | |
| 184.15 x 1219.2 | 3.36 | 215.04 |
| 230 x 1500 | 3.11 | 214.59 |
| 914.4 x 914.4 | 4.18 | 192.28 |

| Product size (mm) | m ² /box | m ² /palette |
|-----------------------------------|---------------------|-------------------------|
| Creation 55 Solid Clic | | |
| 212 x 1238.8 | 1.84 | 104.8 |
| 239.6 x 1460.8 | 2.1 | 100.8 |
| 388.8 x 728.7 | 1.7 | 102 |
| Creation 55 Rigid Acoustic | | |
| 125 x 750 | 1.50 | 84 |
| 177 x 1219 | 1.73 | 96.88 |
| 225 x 1524 | 1.71 | 92.34 |
| 457 x 914 | 1.67 | 93.52 |

| Product size (mm) | m ² /box | m ² /palette |
|--------------------------------------|---------------------|-------------------------|
| Creation 55 Looselay | | |
| 229 x 1220 | 1.67 | 113.6 |
| 152 x 914 | 1.67 | 110.2 |
| 600 x 600 | 2.16 | 103.7 |
| 914 x 914 | 3.34 | 116.9 |
| Creation 55 Looselay Acoustic | | |
| 229x1220 | 2.23 | 124.9 |
| 600x600 | 2.16 | 103.7 |

Exclusive embosses for enhanced designs



EIR - Charming Oak



Stone



Hammered



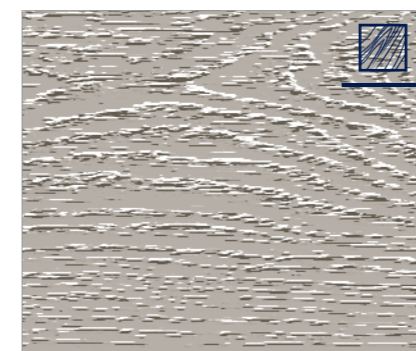
EIR - White Lead Oak



Saw effect



Natural



EIR - Lounge Oak



Brushed



Emboss in register