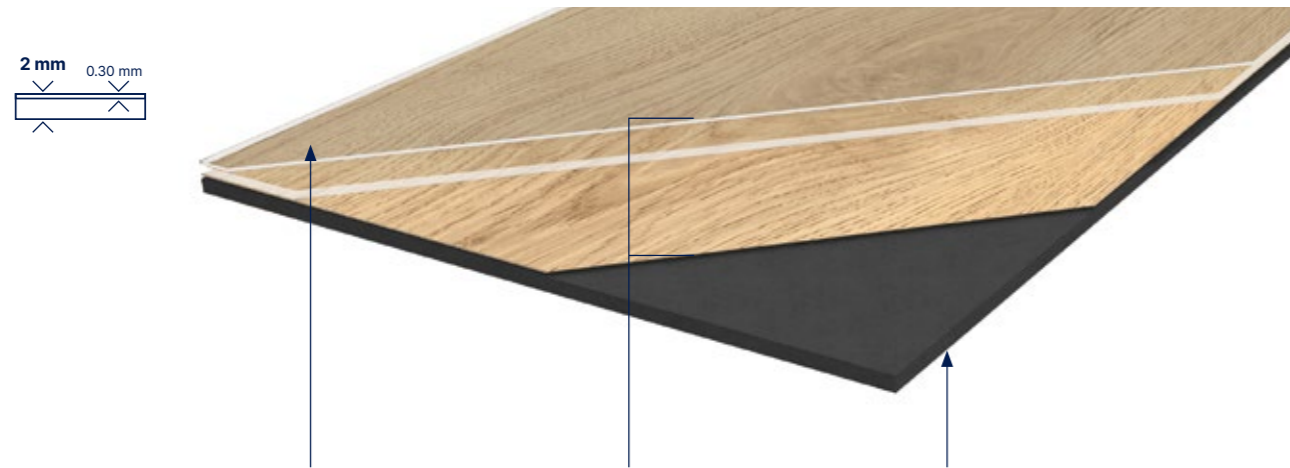


Creation Tiles & planks

Creation 30



2 mm
0.30 mm

PROTECShield™

ENHANCED PERFORMANCES

Micro scratch resistance

Easy maintenance

ULTRA MATT SURFACE

Natural look

4D DESIGN

CRYSTAL WEAR LAYER

Authentic Look

HIGH DEFINITION PRINTED FILM

Ultra realism

STRUCTURED EMBOSS

Ultra realistic surface

BEVELLED EDGES

Tiles & Planks effect

RESILIENT COMFORT CORE



Acoustic comfort



Walking comfort



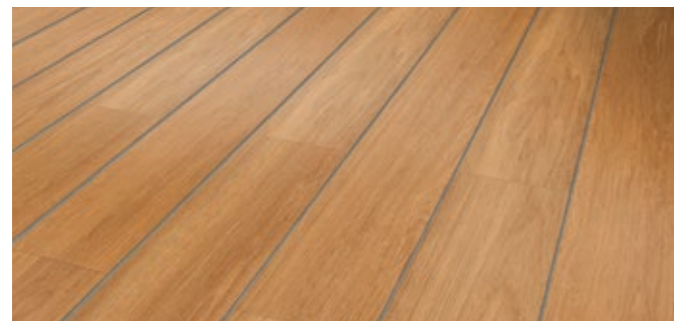
Easy installation



Easy cutting

Creation Tiles & planks decoratives strips

Format (mm) 4×914mm



Code: 3203 + Color code



100% Reach Phthalate free



100% Recyclable
Up to 35% recycled content



TVOC emissions below detection level
(TVOC < 10µg/m³ after 28 days)
No formaldehyde

Formats (mm) 184×1219 212×1239 610×610 457×914



Glue down

Creation 30

Creation 30 Design is a synthetic, decorative, flexible, antistatic abrasion group T floorcoverings available in tile or plank, with bevelled edges. It consists in a 0,3 mm thick transparent wear layer, a design film and a Resilient Comfort Core to provide softness and comfort surface. The overall thickness is 2 mm. They benefit from a cross-linked polyurethane surface treatment (**ProtecShield™**), making maintenance easier and prevent from micro scratches.

Creation 30 Design is a glued floorcovering, resistant to

Can be combined with pre-adhesive underlayer

Gerflor Smart Fix 16 dB



Code: 1698 - Format: 1m x 7.5ml



Creation 30

Creation 30 Design

Description

Total thickness	EN ISO 24346	mm	2
Thickness of wearlayer	EN ISO 24340	mm	0.30
Weight	EN ISO 23997	g/sqm	3 460
Size	EN ISO 24342	mm	Planks - 184 × 1219 / 230×1500 Tiles - 457×914 / 610×610
Number of planks / tiles and sqm per box	-	-	15-11-9-9 / 3.36-3.80-3.76-3.35

Classification

Norm / Product specification	-	-	EN ISO 10582
European classification	EN ISO 10874	class	23 - 31
Fire rating	EN 13501-1	class	Bfl-s1
Static electrical propensity	EN 1815	kV	< 2
Slip resistance wet: ramp test with oil	EN 16165:2021 - Appendix B (DIN 51 130)	class	R10

Performances

Wear resistance	EN 660.2	mm³	≤ 2.0
Wear group	-	group	T
Type Binder content	ISO 10582	type	I
Room impact	NF S 31074	dB	77
Impact sound insulation	EN ISO 717-2	dB	4
Dimensional stability (norm)	EN ISO 23999	%	≤ 0.25
Dimensional stability (average measured value)	-	%	≤ 0.10
Residual indentation	EN ISO 24343-1	mm	≤ 0.10
Castor chair test (type H)	ISO 4918	-	OK
Thermal conductivity	EN ISO 10456	W/(m.k)	0.25
Colour fastness	EN ISO 105-B02	degree	≥ 6
Surface treatment	-	-	ProtecShield™
Chemical products resistance	EN ISO 26987	-	OK

Environment / indoor air quality

TVOC after 28 days	ISO 16000-6	microgram/m³	< 10
Certification	-	-	Floorscore®

CE marking



EN 14041



Creation Tiles & planks

Creation 30 Solid Clic



PROTECSHIELD™

ENHANCED PERFORMANCES



Micro scratch resistance



Easy maintenance

ULTRA MATT SURFACE



Natural look

4D DESIGN

CRYSTAL WEAR LAYER



Authentic Look

HIGH DEFINITION PRINTED FILM



Ultra realism

STRUCTURED EMBOSS



Ultra realistic surface

BEVELLED EDGES



Tiles & Planks effect

DUOCORE 2.0 TECHNOLOGY

RESILIENT COMFORT CORE



Acoustic comfort



Walking comfort

NEW RIGID CORE



Renovation over ceramic tiles 6mm/2mm



Resistance against high temperature variation

CUTTING



Easy cutting

EXCLUSIVE INTERLOCKING SYSTEM

ANGULAR ON LONG SIDE



Quiet installation

VERTICAL ON SHORT SIDE



Traffic resistance Durability



Fast & easy to install



Waterproof Joints



100% Reach Phthalate free



100% Recyclable Up to 55% recycled content



TVOC emissions below detection level (TVOC < 10µg/m³ after 28 days) No formaldehyde

Formats (mm)

212x1238

240x1461

389x729

Protecshield™



Creation 30 Solid Clic

Creation 30 Solid Clic is a decorative, flexible, abrasion group T floorcoverings available in tiles and planks, with bevelled edges. It consists in a 0,3 mm thick transparent wear layer, a design film of 2 m width printed in high definition to have more variety in the design and the technology "Duo Core 2.0": combination of a rigid core back layer for easy renovation and a flexible core top layer to provide softness and comfort surface, the whole with a double reinforcement for enhanced durability. The overall thickness is 4,5 mm. They benefit from a cross-linked polyurethane surface treatment (**Protecshield™**), making maintenance easier and avoiding microscratches.

Creation 30 Solid Clic is an interlocking floorcovering assembled with a vertical system on the short side and a horizontal system on long side for a quick and solid installation. It has a European class (residential / commercial use) 23/31 according to EN-ISO 10874 and has Bfl-s1 class for smoke emission according to EN 13501-1. **Creation 30 Solid Clic** is made with phthalate free plasticizers (except recycled content). It is 100% recyclable and made with a recycled content up to 55%. It is 100% compliant with REACH. **The product emission rate of organic compounds is < 10 microgram/m³ (TVOC < 28 days – ISO 16000-6).**

To be combined with Gerflor acoustic underlayers

Gerflor Acoustic 15 dB



Code: 1798 - Format: 1m x 15ml

Gerflor Acoustic Plus 19 dB



Code: 0704 - Format: 0.98m x 15.3ml

Gerflor Silence Plus 19 dB



Code: 5949 - Format: 1.18m x 8.5ml

Please refer to Gerflor's installation guidelines.

Creation 30 Solid Clic

Description

Total thickness	EN ISO 24346	mm	4.50
Thickness of wearlayer	EN ISO 24340	mm	0.30
Weight	EN ISO 23997	g/sqm	7118
Size	EN ISO 24342	mm	Planks - 212x1238,8 / 240 x 1461 Tiles - 389 x 729
Number of planks / tiles and sqm per box	EN ISO 24342	mm	8-7-7/ 2,10-2,45-1,98

Classification

Norm / Product specification	-	-	EN ISO 10582
European classification	EN ISO 10874	class	23 - 31
Fire rating	EN 13501-1	class	Bfl-s1
Static electrical propensity	EN 1815	kV	< 2
Slip resistance wet: ramp test with oil	EN 16165:2021 - Appendix B (DIN 51 130)	class	R10

Performances

Wear resistance	EN 660.2	mm³	< 2.0
Wear group	-	group	T
Type Binder content	ISO 10582	type	I
Room impact	NF S 31074	dB	79
Impact sound insulation	EN ISO 717-2	dB	4
Dimensional stability (norm)	EN ISO 23999	%	≤ 0.15
Dimensional stability (average measured value)	-	%	≈ 0.05
Residual indentation	EN ISO 24343-1	mm	≤ 0.10
Castor chair test (type H)	ISO 4918	-	OK
Thermal conductivity	EN ISO 10456	W/(m.k)	0.25
Colour fastness	EN ISO 105-B02	degree	≥ 6
Surface treatment	-	-	ProtecShield™
Chemical products resistance	EN 423	-	OK

Environment / indoor air quality

TVOC after 28 days	ISO 16000-6	microgram/m³	< 10
Certification	-	-	Floorscore®

CE Marking



EN 14041



Creation Tiles & planks

Creation 30

DB
Creation 30 (Dry Back)

SOLID CLIC
Creation 30 Solid Clic



Brownie 0459
DB 184 × 1219



Bostonian Oak 0871
DB 184 × 1219 | **SOLID CLIC** 212 × 1239



Cedar Brown 0851
DB 230 × 1500 | **SOLID CLIC** 240 × 1461



Oak Fantasy Honey 1296
DB 184 × 1219 | **SOLID CLIC** 212 × 1239



Oak Fantasy Brown 1294
DB 184 × 1219 | **SOLID CLIC** 212 × 1239



Oak Fantasy Grey 1295
DB 184 × 1219 | **SOLID CLIC** 212 × 1239



Bostonian Oak Honey 0851
DB 184 × 1219 | **SOLID CLIC** 212 × 1239



Quartet Honey 0870
DB 184 × 1219 | **SOLID CLIC** 212 × 1239



Michigan 0461
DB 184 × 1219 | **SOLID CLIC** 212 × 1239



Amarante 0579
DB 184 × 1219



Ballerina 0347
DB 184 × 1219 | **SOLID CLIC** 212 × 1239



Quartet Fauve 0859
DB 184 × 1219 | **SOLID CLIC** 212 × 1239



Quartet 0503
DB 184 × 1219 | **SOLID CLIC** 212 × 1239



Buffalo 0457
DB 184 × 1219



White Lead Oak Dark Beige 1289
DB 184 × 1219



Swiss Oak Golden 0796
DB 184 × 1219 | **SOLID CLIC** 212 × 1239

Creation Tiles & planks

Creation 30

DB
Creation 30 (Dry Back)

SOLID CLIC
Creation 30 Solid Clic



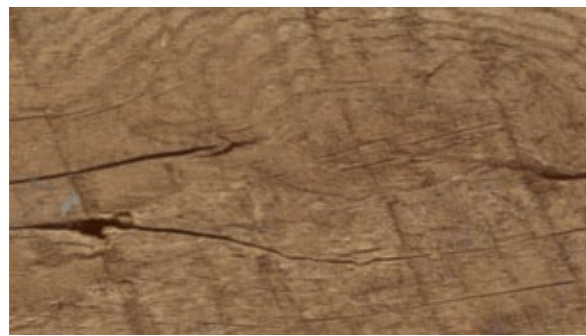
Honey Oak 0441
DB 184 × 1219 | **SOLID CLIC** 212 × 1239



Cedar Pure 0849
DB 184 × 1219 | **SOLID CLIC** 240 × 1239



Twist 0504
DB 184 × 1219 | **SOLID CLIC** 212 × 1239



Rustic Oak 0445
DB 184 × 1219 | **SOLID CLIC** 212 × 1239



Cambridge 0465
DB 184 × 1219



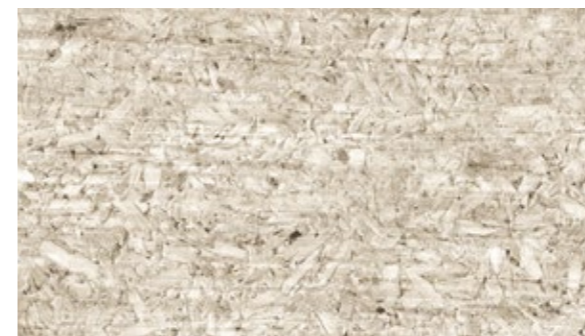
Northwood Mokaccino 0817
DB 184 × 1219



Long Board 0455
DB 184 × 1219 | **SOLID CLIC** 212 × 1239



White Lead Oak Blond 1288
DB 184 × 1219



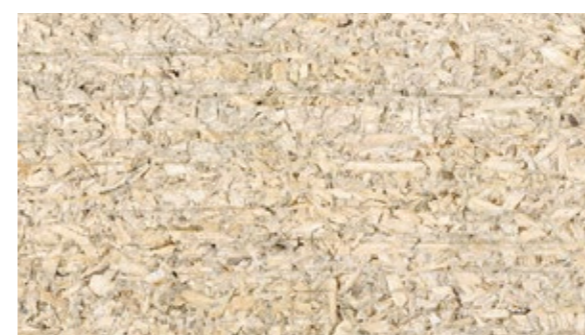
Salento Light Grey 1287
DB 184 × 1219 | **SOLID CLIC** 212 × 1239



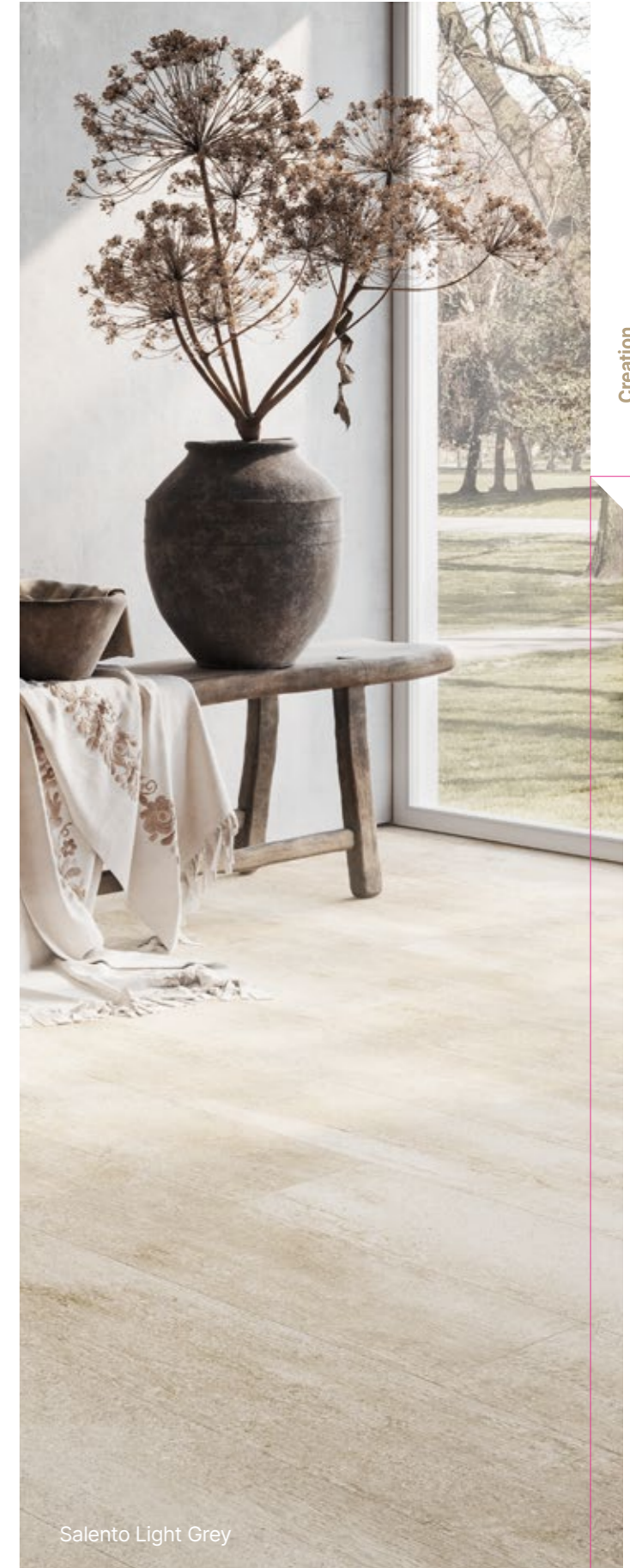
Braukerne Natural 1292
DB 184 × 1219 | **SOLID CLIC** 212 × 1239



Braukerne Beige 1293
DB 184 × 1219 | **SOLID CLIC** 212 × 1239



Salento Beige 1286
DB 184 × 1219 | **SOLID CLIC** 212 × 1239



Salento Light Grey

Creation
Tiles & planks

Creation Tiles & planks

Creation 30

DB Creation 30 (Dry Back) **SOLID CLIC** Creation 30 Solid Clic



Chevron Hurricane 0809
DB 184 × 1219



Oxford 0061
DB 184 × 1219



Swiss Oak Beige 0848
DB 184 × 1219 | **SOLID CLIC** 212 × 1239



Malua Bay 0448
DB 184 × 1219 | **SOLID CLIC** 212 × 1239



Bostonian Oak Grey 0855
DB 184 × 1219



Amador 0447
DB 184 × 1219 | **SOLID CLIC** 212 × 1239



Arena 0060
DB 184 × 1219



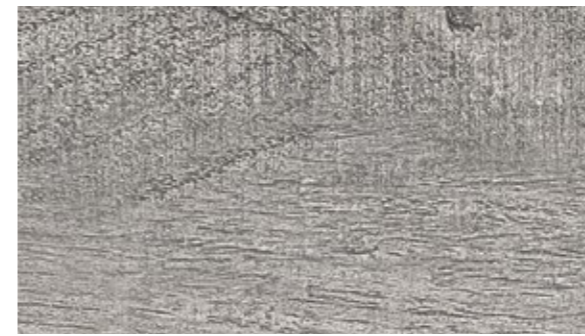
Bostonian Oak Beige 0853
DB 184 × 1219 | **SOLID CLIC** 212 × 1239



Ranch 0456
DB 184 × 1219 / 230×1500 | **SOLID CLIC** 212 × 1239



Paint Wood Taupe 0856
DB 184 × 1219



Swiss Oak Pearl 0846
DB 184 × 1219 | **SOLID CLIC** 212 × 1239



White Lime 0584
DB 184 × 1219 | **SOLID CLIC** 212 × 1239



White Lead Oak Shadow Grey 1290
DB 184 × 1219



Swiss Oak Cashmere 0795
DB 184 × 1219



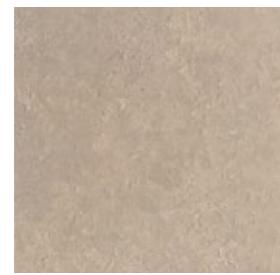
Stripe Oak Ice 0858
DB 184 × 1219



Northwood Macchiato 0816
DB 184 × 1219

Creation Tiles & planks

Creation 30



Durango Taupe 0751
DB 610 x 610



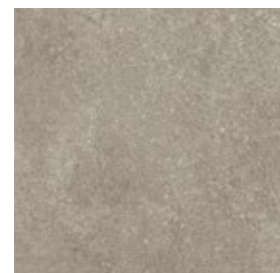
Curton Stone Light Grey 1275
DB 457 x 914
SOLID CLIC 389 x 729



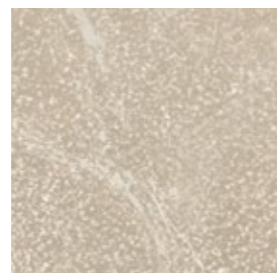
Durango Moka 0750
DB 610 x 610



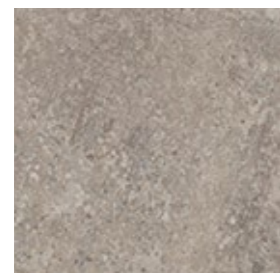
Curton Stone Light Beige 1276
DB 457 x 914
SOLID CLIC 389 x 729



Bloom Uni Taupe 0868
DB 610 x 610
SOLID CLIC 389 x 729



Reggia Ivory 0861
DB 457 x 914



Back Street 0748
DB 457 x 914



Urban Street Beige 1285
DB 610 x 610



Curton Stone Light Beige



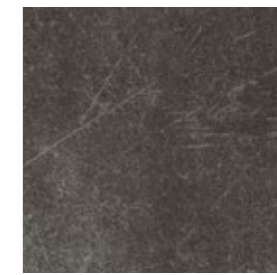
Oppland Stone

DB
Creation 30 (Dry Back)

SOLID CLIC
Creation 30 Solid Clic



Oppland Stone 1291
DB 457 x 914



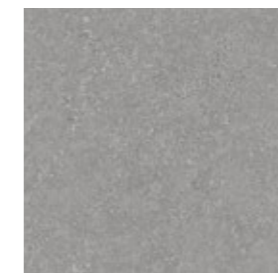
Parker Station 0374
DB 610 x 610
SOLID CLIC 389 x 729



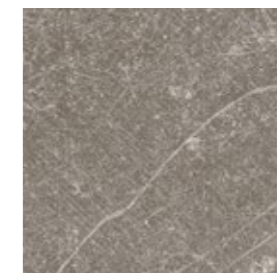
Riverside 0436
DB 610 x 610
SOLID CLIC 389 x 729



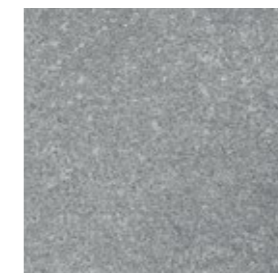
Silver City 0373
DB 610 x 610



Urban Street Medium 1284
DB 610 x 610



Carmel 0618
DB 457 x 914
SOLID CLIC 389 x 729









Bloom Uni Grey 0869
DB 610 x 610
SOLID CLIC 389 x 729



Urban Street Light 1283
DB 610 x 610

Creation Tiles & planks

Creation 30

Code	Color Design	Dry Back	Solid Clic	Skirting Matching design	Coverstrip Matching design	Emboss	NCS	LRV
								
0447	Amador	184 x 1219	212 x 1239	S004	S004	Saw Effect	5005-Y50R	25.1
0579	Amarante	184 x 1219	-	S005	S001	Brushed	5010-Y30R	21.3
0060	Arena	184 x 1219	-	S026	S001	Saw Effect	4005-Y20R	37.2
0748	Back Street	457 x 914	-	S095	S001	Hammered	4502-Y	27.9
0347	Ballerina	184 x 1219	212 x 1239	S008	S008	Natural	4040-Y20R	28.4
0869	Bloom Uni Grey	610 x 610	389 x 729	S071	S071	Hammered	5005-B20G	23.2
0868	Bloom Uni Taupe	610 x 610	389 x 729	S072	S072	Hammered	4502-Y	28.5
0871	Bostonian Oak	184 x 1219	212 x 1239	S016	S016	Natural	5020-Y20R	26.4
0853	Bostonian Oak Beige	184 x 1219	212 x 1239	S017	S017	Natural	4005-Y20R	36.7
0855	Bostonian Oak Grey	184 x 1219	-	S018	S001	Natural	6005-Y20R	24.0
0851	Bostonian Oak Honey	184 x 1219	212 x 1239	S019	S019	Natural	4020-Y20R	29.8
1293	Braukerne Beige	184 x 1219	212 x 1239	S158	S001	Brushed	3010-Y40R	35.8
1292	Braukerne Natural	184 x 1219	212 x 1239	S159	S001	Brushed	3020-Y60R	29.3
0459	Brownie	184 x 1219	-	S073	S001	Natural	6020-Y30R	10.7
0457	Buffalo	184 x 1219	-	S075	S001	Brushed	6010-Y10R	16.3
0465	Cambridge	184 x 1219	-	S065	S001	Natural	3030-Y20R	39.8
0618	Carmel	457 x 914	389 x 729	S020	S020	Hammered	6005-Y50R	19.2
0850	Cedar Brown	230 x 1500	240 x 1461	S024	S024	Natural	5020-Y20R	21.3
0849	Cedar Pure	230 x 1500	240 x 1461	S025	S025	Natural	3010-Y30R	39.8
0809	Chevron Hurricane	184 x 1219	-	S030	S001	Natural	6502-Y	13.8
1276	Curton Stone Light Beige	457 x 914	389 x 729	S184	S184	Stone	2010-Y40R	48.9
1275	Curton Stone Light Grey	457 x 914	389 x 729	S185	S185	Stone	3005-Y20R	45.9
0750	Durango Moka	610 x 610	-	S164	S001	Hammered	6005-Y50R	20.5
0751	Durango Taupe	610 x 610	-	S093	S001	Hammered	3005-Y20R	37.7
0441	Honey Oak	184 x 1219	212 x 1239	S033	S033	Natural	4020-Y20R	27.7
0455	Long Board	184 x 1219	212 x 1239	S034	S034	Brushed	4010-Y30R	24.8
0448	Malua Bay	184 x 1219	212 x 1239	S035	S035	Brushed	2502-Y	47.1
0461	Michigan	184 x 1219	212 x 1239	S038	S038	Brushed	6020-Y30R	13.5
0816	Northwood Macchiato	184 x 1219	-	S040	S001	Brushed	1502-Y50R	67.8
0817	Northwood Mokaccino	184 x 1219	-	S041	S001	Brushed	3010-Y30R	39.3
1294	Oak Fantasy Brown	184 x 1219	212 x 1239	S172	S001	Brushed	7010-Y90R	8.7
1295	Oak Fantasy Grey	184 x 1219	212 x 1239	S173	S001	Brushed	6010-Y70R	11.4
1296	Oak Fantasy Honey	184 x 1219	212 x 1239	S174	S001	Brushed	5020-Y50R	19.5
1291	Oppland Stone	457 x 914	-	S175	S001	Hammered	7500-N	7.7
0061	Oxford	184 x 1219	-	S043	S001	Brushed	5502-Y	19.2
0856	Paint Wood Taupe	184 x 1219	-	S046	S001	Brushed	5502-Y	18.9
0374	Parker Station	610 x 610	389 x 729	S047	S047	Hammered	8000-N	12.6
0503	Quartet	184 x 1219	212 x 1239	S056	S056	Natural	5020-Y20R	19.4
0859	Quartet Fauve	184 x 1219	212 x 1239	S057	S057	Natural	4030-Y20R	23.9
0870	Quartet Honey	184 x 1219	212 x 1239	S058	S058	Natural	3040-Y20R	28.2
0456	Ranch	184 x 1219	212 x 1239	S053	S053	Brushed	5005-Y50R	23.5
0861	Reggia Ivory	230 x 1500	-	S054	S001	Stone	3010-Y20R	46.1
0436	Riverside	457 x 914	389 x 729	S032	S032	Hammered	6502-Y	16.7
0445	Rustic Oak	610 x 610	212 x 1239	S062	S062	Natural	4030-Y20R	20.4
1286	Salento Beige	184 x 1219	212 x 1239	S186	S186	Natural	2010-Y40R	37.0
1287	Salento Light Grey	184 x 1219	212 x 1239	S187	S187	Natural	2005-Y40R	46.6
0373	Silver City	184 x 1219	-	S048	S001	Hammered	6502-Y	19.1
0858	Stripe Oak Ice	610 x 610	-	S009	S001	Natural	3502-Y	37.3
0848	Swiss Oak Beige	184 x 1219	212 x 1239	S011	S011	Natural	3010-Y30R	40.1
0795	Swiss Oak Cashmere	184 x 1219	-	S012	S001	Natural	4010-Y30R	33.3
0796	Swiss Oak Golden	184 x 1219	212 x 1239	S015	S015	Natural	4030-Y20R	25.8
0846	Swiss Oak Pearl	184 x 1219	212 x 1239	S014	S014	Natural	3502-Y	36.1
0504	Twist	184 x 1219	212 x 1239	S039	S039	Natural	3010-Y30R	38.9
1285	Urban Street Beige	184 x 1219	-	S178	S001	Hammered	4005-Y50R	31.2
1283	Urban Street Light	610 x 610	-	S094	S001	Hammered	3502-R	42.3
1284	Urban Street Medium	610 x 610	-	S180	S001	Hammered	4502-R	26.5
1288	White Lead Oak Blond	610 x 610	-	S181	S001	Brushed	3010-Y40R	29.6
1289	White Lead Oak Dark Beige	184 x 1219	-	S182	S001	Brushed	5010-Y10R	25.3
1290	White Lead Oak Shadow Grey	184 x 1219	-	S183	S001	Brushed	3502-Y	34.6
0584	White Lime	184 x 1219	212 x 1239	S074	S074	Saw Effect	4005-Y20R	36.0

S001:
White S001:
Aluminium

Packaging

Product size (mm)	m ² /box	m ² /pallet	Product size (mm)	m ² /box	m ² /pallet
Creation 30 Design			Creation 30 Solid Clic		
457 x 914	3.76	248.16	212 x 1239	2.10	113.50
610 x 610	3.35	234.50	240 x 1461	2.45	117.60
184 x 1219	3.36	241.92	389 x 729	1.98	107.10
230x1500	3.80	250.80			
Chevron 184 x 1219	3.14	251.20			

Exclusive embosses



Stone



Saw effect



Brushed



Hammered



Natural